

# INITIAL SERIES



The premium solution for endoscopy



SOPRO COMEG

# THE PREMIUM SOLUTION FOR ENDOSCOPY



## SOPRO 184

### Performance and simplicity

The new **iCe** (intelligent control endoscope) feature of the SOPRO 184 optimizes all settings according to the endoscope in use. The camera delivers outstanding image quality under any circumstances.

Smart and user friendly, the SOPRO 184 is equipped with 2 fully programmable camera head buttons, a new OLED display and SDI outputs.



## SOPRO 284

### Unrivalled light distribution with LED technology

The power and balance of light emitted by the SOPRO 284 will ensure working comfort in any circumstances. In addition, the temperature of color\* optimizes differentiation of tissue.

## SOPRO 640

### The SOPRO 640\*\* insufflator provides exceptional performance with enhanced safety and reliability

The 30 L insufflator is the best option on the market for safer surgery with its ability to maintain pneumoperitoneum under the most extreme conditions. It offers ease of use providing clear information with its LCD display messages.

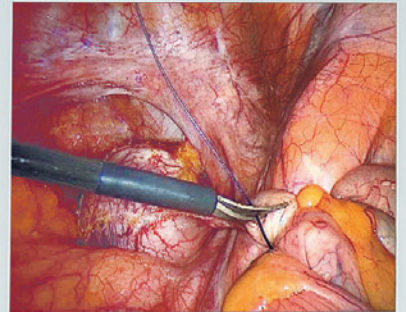


\* 6500°K.

\*\* Also available in 20 L.

## 19" SURGICAL DISPLAY

A color flat panel display with a resolution of 1280 x 1024 which has been specifically designed for medical imaging applications. The display's high brightness and excellent viewing angle guarantee optimum efficiency. User controls are available through On-Screen Display and PIP.



## MEDICAL CART

Enjoy the best ergonomics!  
Slim and easy to use (size 170 x 55 x 60cm)

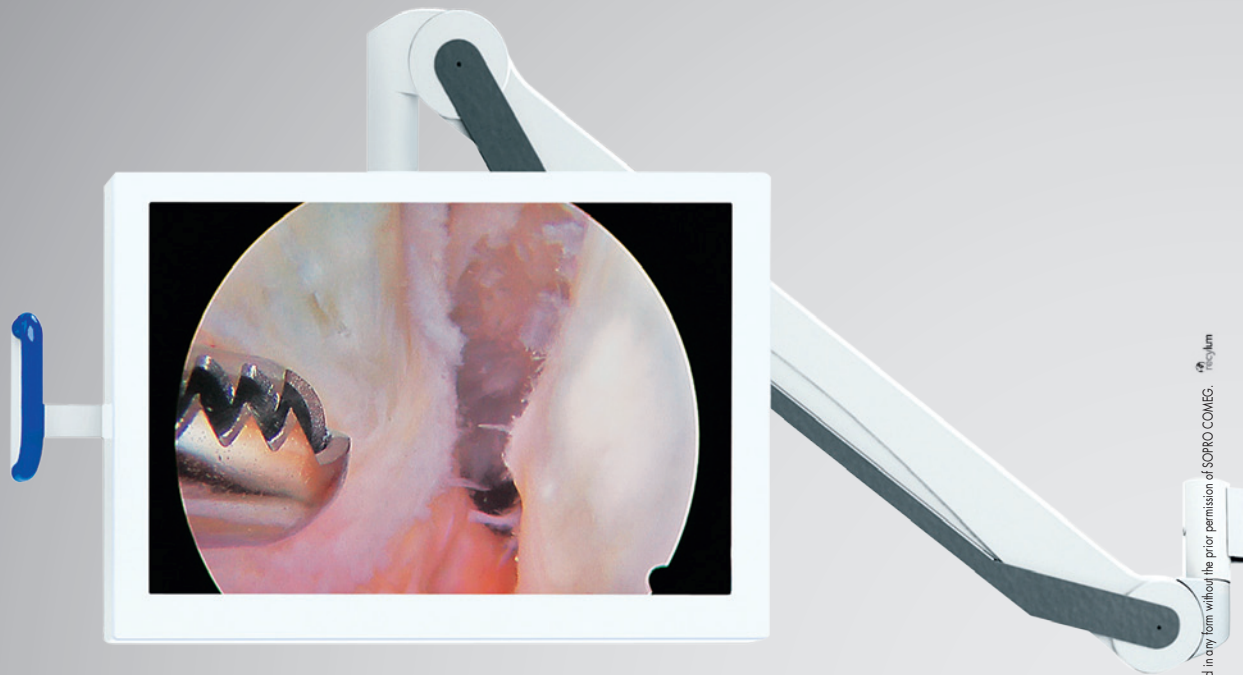
## OPTICS

Regardless of your specialty, we will supply you with optics: Ulyss<sup>®</sup>, arthroscopes, cystoscopes, hysteroscopes, ... achieving picture-perfect imaging quality. The image is both focused and distortion-free, providing a clear view increasing the accuracy of surgery.



# INITIAL SERIES

The premium solution for endoscopy



## SOPRO 684

The Sopro 684 shaver handpiece provides aggressive tissue resection and rapid bone debridement during arthroscopic surgery. The easy-to-use device is ideal for all arthroscopic procedures. It combines power and precision to offer maximum cutting performance and comfort for today's surgeon.

## SOPRO 670

The Sopro 670 arthroscopy pump provides superior visualization during arthroscopic procedures due to its flush function and compact suction management system.

Leakages are quickly compensated and coupled with the instantaneous overpressure release function. The pump offers the highest safety level in fluid management.



SOPRO COMEG



SOPRO - ZAC Athélia IV  
Avenue des Génévriers - 13705 La Ciotat cedex - France  
Tél. +33 (0) 442 98 01 01 - Fax +33 (0) 442 71 76 90  
[www.sopro-comeg.com](http://www.sopro-comeg.com)