



LAPAROSCOPY



SOPRO COMEG

CONTENTS

1	COMPANY	5
2	OPTICS	11
3	TROCARS	23
4	DISSECTING AND GRASPING FORCEPS	39
5	SCISSORS, BIOPSY FORCEPS	69
6	INSTRUMENTS FOR COAGULATION	81
7	ACCESSORIES	93
8	SUTURE AND LIGATURE	99
9	STERILIZATION AND MAINTENANCE	105

French manufacturing plant

La Ciotat - FRANCE

Surface : 3 200 m²



German manufacturing plant

Tuttlingen - GERMANY

Surface : 2 600 m²

1 COMPANY

Company history	p6
Products range at a glance.....	p7
Regulatory.....	p8
Research & Development	p9
Service & Assistance	p9
Representative offices	p9

1 COMPANY



SOPRO

1977

SOPRO was founded.

1986

Introduction of microcameras for endoscopy.

2001

SOPRO joins the Acteon Group.

2003

Sopro moves into a bigger, brand new building in La Ciotat.

2004

Acquisition of Geysler and development of a range of insufflators and pumps.

COMEG

1975

COMEG was founded.

1977

Introduction of medical endoscopes.

1993

Introduction of autoclavable endoscopes.

1994

Introduction of the urology product line.

2001

New optical generation of medical endoscopes.



SOPRO COMEG

2006

COMEG joins SOPRO

2007

Introduction of a Spine surgery product line

2009

Introduction of the SOPRO 397 3CCD Full HD camera

Introduction of the Sopro Medical Software

Introduction of a range of bipolar forceps & scissors

2010

Introduction of the Full HD laparoscope

Introduction of HEOS, the hysteroscopic endo operative system

Introduction of UBIPACK, the complete solution for gynecology and ENT

2011

Introduction of ULYSS, 4mm autoclavable endoscope with variable direction of view

2012

New range of uretero-renoscopes

2013

Introduction of a bipolar resectoscopy range

2014

Introduction of SYMBIOZ and the SCard

1 COMPANY

PRODUCTS RANGE AT A GLANCE

SOPRO-COMEG offers a complete range ranking from capital equipment to re-usable, high quality, durable instruments. Whatever your application is: Urology, Laparoscopy, Arthroscopy, Gynecology, Spine, ENT, SOPRO-COMEG will offer you the best solution and fulfill your needs.



Capital equipment

SOPRO-COMEG meets the needs of international surgeons and distributors by supplying complete solutions for video endoscopy. Our range includes equipment for both consulting and operating rooms, using latest technologies available in the market. Full HD video cameras, Xenon and LED light sources, insufflators, pumps, shaver, medical grade monitors and visualization/archiving systems. These products have already proven their worldwide reliability and are considered today as a standard in the mini invasive surgery field.

SOPRO-COMEG proposes a complete range of instruments for entry into the peritoneum, the first and most crucial step in successful laparoscopic surgery. A complete range of hand instruments in both monopolar and bipolar electrocautery versions is also available. The full HD 10mm laparoscope will provide you the quality you need for High Definition picture.

Laparoscopy



Urology

SOPRO-COMEG, a company with over 25 years experience in the urology field, offers endoscopes with exceptional optical quality and a complement of instruments which will ease even the most demanding urological procedures including: cystoscopy, resectoscopy and urethrotomy. These products are an integral part of recent technological advancements which improve the diagnosis-treatment process and the level of care that urologists can now offer to their patients.

Gynecology, hysteroscopy, resectoscopy and other procedures are made easier with the SOPRO-COMEG products. Clarity and efficiency are the key words of our gynecology range.

Gynecology



Arthroscopy

Sharp images, precision in visualization are possible through the use of our range for arthroscopy from 4.0mm telescopes to the small-joint arthroscopic lines.

Our spinal endoscopy system allows to treat disc-diseases. All types of hernias can be removed in a minimal invasive interlamiar approach, by means of the endoscopic technique. The technique also qualifies for the effective treatment of chronic back-ailments caused by disc-prolaps or tears. Furthermore, endoscopic treatment of spinal stenosis has increased.

Spine



ENT

Our field of activities also includes all areas of the ENT disciplines, whether it is diagnostics or therapy, practice or clinic. We propose rigid endoscopes and accessories necessary for sinuscopy, otoscopy and laryngoscopy. All our instruments are manufactured with the highest quality materials.

1 COMPANY

REGULATORY

Our business practices and processes are designed to achieve quality results that exceed the expectations of patients, customers, surgeons. We are dedicated to the delivery of quality healthcare products around the world.

From the start of development of a new device through manufacturing to the final quality control check before delivery, Quality is built in to all our products, as is our commitment and dedication to our customers throughout the world.

Both plants are certified to the highest international quality standard, ISO 13485 for Design, Manufacturing and Sales. Our products comply with the various regulations established across the world, specifically those required by the Food and Drugs Administration and the European Union.

SOPRO and SOPRO-COMEG manufactures equipments and endoscopes in accordance with the following directives or standards:

- Medical device directive 93/42 EEC (M5 2007/47 EEC)
- DIN EN ISO 13485 : 2003 AC:2007 certified : Quality management system
- EN ISO 13485: 2003 AC:2007 certified Quality management system
- EN ISO 13485: 2003 AC:2007 certified Quality management system (issued according to CMDCAS program requirements)
- Series of standards IEC 60601
- Series of standards ISO 8600
- FDA regulations* (FDA Quality system Regulation 21 CFR Part 820).
- EC attestations issued for all our class II devices..



*the newest ones may be 510(k) pending.

1 COMPANY

RESEARCH & DEVELOPMENT

Innovation being the key to improve health, SOPRO-COMEG invests a significant part of its revenue in R&D and patents filing. Our world-renowned know-how is medical imaging, relying on senior engineers with strong expertise in electronics, software, optics and mechanics.

Also, we in SOPRO-COMEG, have access to the very wide R&D department and connections of our mother company, Acteon group, adding to the previous know-how : ultrasounds, chemical, motors, X-Ray and Cone Beam Computed Tomography systems (CBCT).

This very rare combination of know-how allows us to join the extremely limited group of the companies mastering the design & the manufacturing of the complete endoscopy solution.

SERVICE & ASSISTANCE

In both our main plants (La Ciotat and Tuttlingen), our on-site specialists are dedicated to servicing and providing expertises to your SOPRO-COMEG products:

- Express repair of all our products under warranty
- Free quotation for all repairs out of warranty
- Qualified repair with original spare parts
- Streamline endoscope exchange program)
- Technical training

• **SOPRO-COMEG in France**
(Equipment)
ZAC Athelia 4
Avenue des Génévriers
13705 La Ciotat cedex
Tel +33(0)442 98 01 09
cs@sopro-comeg.com

• **SOPRO-COMEG GmbH**
(Endoscopes and accessories)
Serviceabteilung
Domierstrasse 55
78532 Tuttlingen - Germany
Tel +49 (0) 7461-9344-17
michael.waldvogel@sopro-comeg.com

SOPRO-COMEG REPRESENTATIVE OFFICES

Our local staff will support you, wherever you are in the world.

• **China** - ACTEON China
Office 401
No.12 Xinyuanxili Zhong Street,
Chaoyang District, Beijing 100027
Tel +86 10 646 57011/2/3
info.cn@sopro-comeg.com

• **Middle East** - ACTEON Middle East
Numan center 1st Floor N°111
Gardens street
PO box 468 - 11953 Amman Jordan
Tel +962 6 553 4401
info.me@sopro-comeg.com

• **USA** - ACTEON Inc.
124 Gaither Drive, Suite 140
Mount Laurel, NJ 08054
Tel +1 856 222 9988
info.us@sopro-comeg.com

• **Russia** - ACTEON Russia
Valdayskiy Proezd 16
Office 243
125445 Moscow
Tel + 7 499 76 71 316
info.ru@sopro-comeg.com

• **Taiwan** - ACTEON Taiwan
14F.-1, N°433, Jingping Rd.
Jhonghe City - Taipei County 235
Tel +866 926 704 505
tina.chu@tw.acteongroup.com

• **India** - ACTEON India
B-94 G.I.D.C ELECTRONIC ESTATE
Sector 25
Gandhinagar - Gujarat - 382023
Tel +91 (79) 2328 7473
ajay.sadana@in.acteongroup.com

• **United Kingdom** - ACTEON UK
Unit 1 Steel close, Eaton Socon, St Neots
Cambridgeshire, PE19 8TT
Tel +44 1480 477 307
info@acteongroup.co.uk
www.acteongroup.co.uk

• **Germany** - ACTEON GmbH
Industriestraße 9,
40822 Mettmann
Tel +49 2104 956510
timo.hand@de.acteongroup.com

• **Italy** - ACTEON Italia
Via Roma 45
21057 Olgiate Olona (Varese)
Tel : +39 0331 376 760
andrea.castellini@acteongroup.com



2 OPTICS

SOPRO-COMEG optics	p12
Streamline Exchange Program.....	p13
General information	p14
Telescopes	p15

2 OPTICS

SOPRO-COMEG OPTICS



With more than 30 years as well known manufacturer, SOPRO-COMEG develops its own endoscopes in Tuttlingen (Germany) with the best and latest technology know-how.

- **Stainless steel tubes:**

Choice of stainless steel tubes is done to ensure optimal quality and solidity by using European quality stainless steels. Our mechanical manufacturing department is making all cutting, polishing, finishing steps to provide you the optimal devices quality and to offer better resistance to disinfection chemical agent.

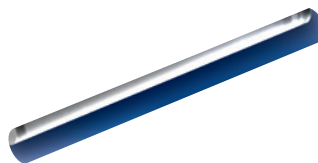
- **Rod lenses, objective and ocular:**

Since several years, SOPRO-COMEG research and development department does optical calculation to optimized parameters of brightness, contrast and resolution according to the intended use of the endoscope.

Sizes, designs, optical coatings, raw materials, all are precisely chosen by our engineers to achieve the quality you need.

By using the well-known **rod lenses** design and added **multi coating** on each interfaces, the SOPRO-COMEG endoscope offers you the best of the know-how in medical endoscope manufacturers.

During assembly process, the complete optical system is optimized with ocular and objective to achieve the requirements of quality. Our SOPRO-COMEG Full HD laparoscope is able to provide a constant **high resolution** picture full screen in order to complete your Full HD video chain.



- **Light fibers** are selected and calculated to provide maximum light in the operating field. Our internal manufacturing process permits to position the fibers in order to illuminate in the same direction as the direction of view of your endoscope. Endoscope light fibers can easily be connected to many of existing light cable and all our endoscope are delivered with light cable adapters (Karl Storz, Olympus, Richard Wolf, ACMI).

- **Cleaning, disinfection, sterilization and reliability** are ones of the most important requirements of today endoscopes.

Thanks to our **laser welding** technology and our validated manufacturing processes, SOPRO-COMEG offers a constant assembly quality. The use of distal and proximal **sapphire window** avoids many scratches on the optical system and the tightness of the optical system is done with patented process using valuable raw materials. With this high technology, SOPRO-COMEG endoscopes are warranty autoclavable up to 134°C during 20 minutes, double fore-vacuum.

Cleaning disinfection and sterilization processes are validated by external laboratory to ensure the respect of quality requirements. Our SOPRO-COMEG endoscopes can be clean manually or with automatic machines as defined in our user manual. SOPRO-COMEG endoscopes are compatible with the following sterilization methods:

- Steris TM
- Sterrad
- Vapor sterilization
- EtO
- Cidex
- Henkel-Ecolab Sekumatic FRE

2 OPTICS

STREAMLINE EXCHANGE PROGRAM

Efficiency and reactivity are the main goals of our service department.

The **Streamline endoscope exchange program** is the perfect example of these commitments.

Streamline exchange program allows you to exchange your defective autoclavable optics from any brands for a newly manufactured SOPRO-COMEG optics.

All Streamline endoscopes are manufactured in our plant in Tuttlingen, Germany, with original parts to fulfill all specifications, standards and regulatory compliance ISO 13485 as the other SOPRO-COMEG optics. All individual parts are carefully checked by our incoming inspection department before assembly to achieve the quality you need.

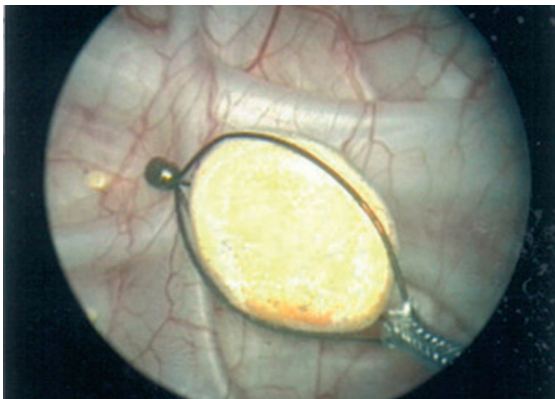
48h: it's the time we need to send you your Streamline endoscope after receipt of your order.

Whatever is the autoclavable optics you send to us we provide your needs.

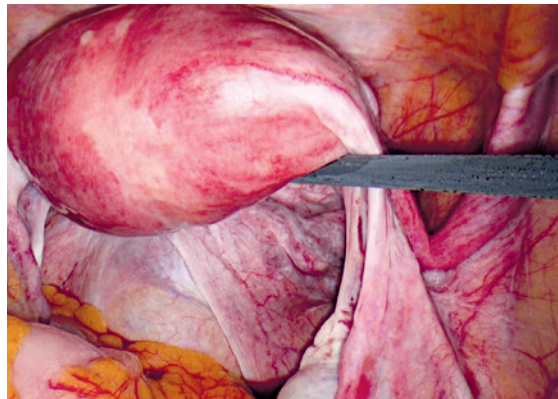
As example, you can send us a broken autoclavable sinuscope from other brand and asking for a SOPRO-COMEG Full HD Streamline 10mm laparoscope.

Nevertheless, the SOPRO-COMEG optics technology permits to proceed, most of the time, to a repair. After expertise of your medical device, our technician will sent you a repair offer according to the repair flat rate.

If the device cannot be repair we will send you an offer for a Streamline product or, if the optics is not eligible to this Streamline exchange program, a very attractive pricing for new endoscope.



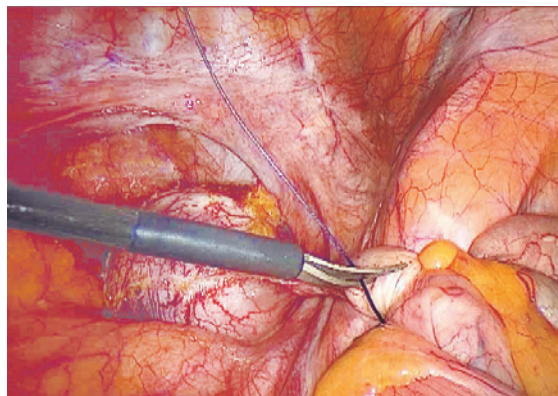
Cystoscopy



Gynecology



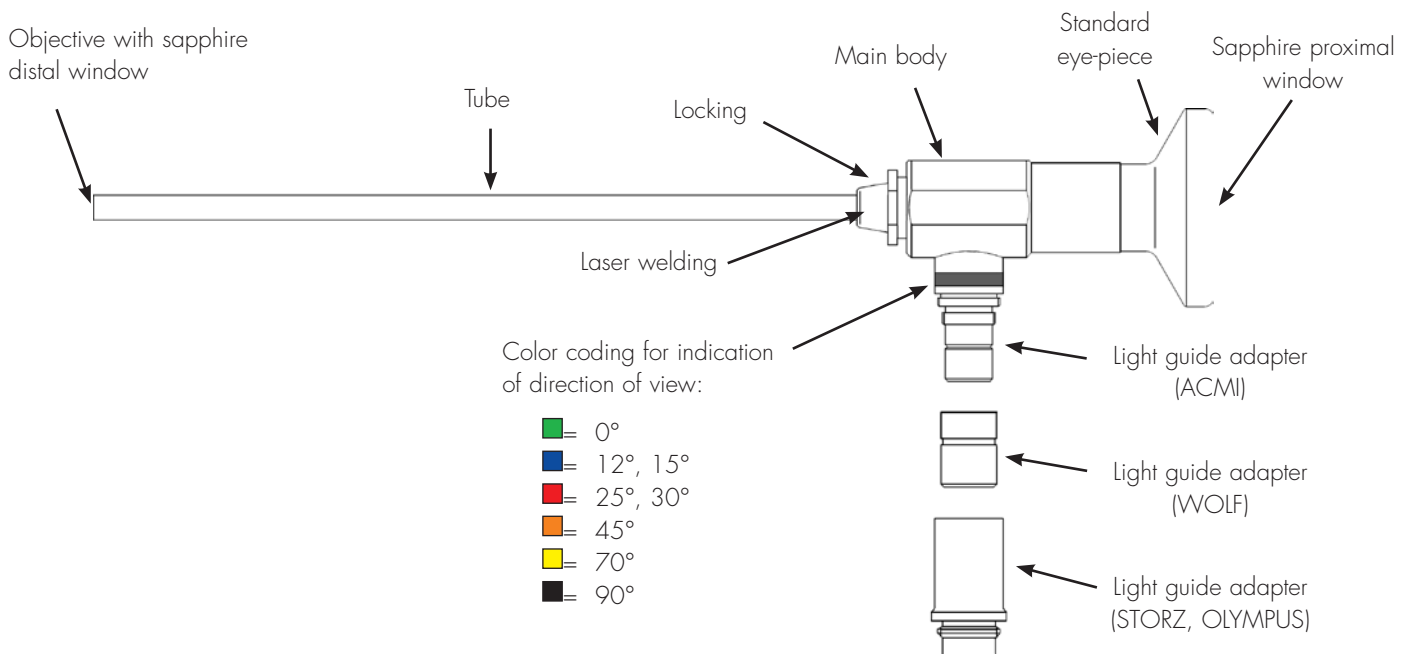
Sinuscopy



Laparoscopy

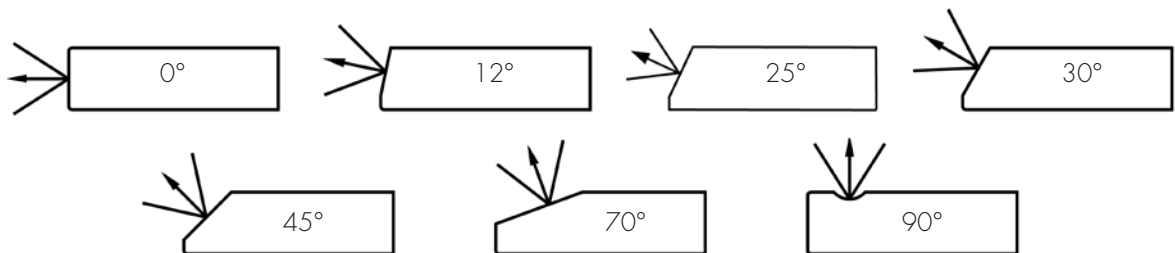
2 OPTICS

GENERAL INFORMATION



Direction of view

Direction of view is defined by the angle between the deviation of the middle beam and the axis of the optical system.



Field of view

Field of view is defined by the angle between the most left and right peripheral beam of the image. It is important for the distinction of wide-angle and standard-angle telescopes.



"WIDE ANGLE" (WA)



"Wide angle" telescopes provide a bigger field of view.

2 OPTICS

TELESCOPES



Ø 2 mm



Art.-No.	Description
163 202 600	Straight forward telescope 0° wide angle  Enlarged view, Length 260mm, With rod lenses optical system Autoclavable With fiber optic light transmission incorporated Color code: ■
163 202 990	Straight forward telescope 0°  Length 235mm, With fiber optical system Autoclavable With fiber optic light transmission incorporated Color code: ■


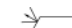

Ø 3 mm



Art.-No.	Description
163 312 990	Straight forward telescope 0° wide angle  Enlarged view, Length 301mm, With rod lenses optical system Autoclavable With fiber optic light transmission incorporated Color code: ■
163 312 992	Forward oblique telescope 30° wide angle  Enlarged view, Length 301mm, With rod lenses optical system Autoclavable With fiber optic light transmission incorporated Color code: ■

Ø 5 mm



Art.-No.	Description
162 053 040	Straight forward telescope 0°  Enlarged view, Length 306mm, With rod lenses optical system Autoclavable With fiber optic light transmission incorporated Color code: ■
162 053 042	Forward oblique telescope 30°  Enlarged view, Length 306mm, With rod lenses optical system Autoclavable With fiber optic light transmission incorporated Color code: ■
162 053 043	Straight forward telescope 45°  Enlarged view, Length 306mm, With rod lenses optical system Autoclavable With fiber optic light transmission incorporated Color code: ■

2 OPTICS

TELESCOPES

∅ 5,5 mm



Art.-No.	Description
162 053 150 <i>FULL HD</i>	Straight forward telescope 0° Enlarged view, Length 316mm With rod lenses optical system Autoclavable With fiber optic light transmission incorporated Color code: ■
162 053 152 <i>FULL HD</i>	Forward oblique telescope 30° Enlarged view, Length 316mm With rod lenses optical system Autoclavable With fiber optic light transmission incorporated Color code: ■
162 053 153 <i>FULL HD</i>	Forward oblique telescope 45° Enlarged view, Length 316mm With rod lenses optical system Autoclavable With fiber optic light transmission incorporated Color code: ■

∅ 5,5 mm BARIATRIC



Art.-No.	Description
162 054 500	Straight forward telescope 0° Enlarged view, Length 458mm With rod lenses optical system Autoclavable With fiber optic light transmission incorporated Color code: ■
162 054 502	Forward oblique telescope 30° Enlarged view, Length 458mm With rod lenses optical system Autoclavable With fiber optic light transmission incorporated Color code: ■
162 054 503	Forward oblique telescope 45° Enlarged view, Length 458mm With rod lenses optical system Autoclavable With fiber optic light transmission incorporated Color code: ■

2 OPTICS

TELESCOPES

∅ 10 mm



Art.-No.	Description	
162 103 250 <i>FULL HD</i>	FULL HD Straight forward telescope 0° Enlarged view, Length 323mm With rod lenses optical system Autoclavable With fiber optic light transmission incorporated Color code: ■	
162 103 252 <i>FULL HD</i>	FULL HD Forward oblique telescope 30° Enlarged view, Length 325mm With rod lenses optical system Autoclavable With fiber optic light transmission incorporated Color code: ■	
162 103 253 <i>FULL HD</i>	FULL HD Forward oblique telescope 45° Enlarged view, Length 325mm With rod lenses optical system Autoclavable With fiber optic light transmission incorporated Color code: ■	

∅ 10 mm BARIATRIC



Art.-No.	Description	
162 104 500	Straight forward telescope 0° Enlarged view, Length 450mm With rod lenses optical system Autoclavable With fiber optic light transmission incorporated Color code: ■	
162 104 502	Forward oblique telescope 30° Enlarged view, Length 450mm With rod lenses optical system Autoclavable With fiber optic light transmission incorporated Color code: ■	
162 104 503	Forward oblique telescope 45° Enlarged view, Length 450mm With rod lenses optical system Autoclavable With fiber optic light transmission incorporated Color code: ■	

2 OPTICS

TELESCOPES



Ø 10 mm

Art.-No.	Description
162 102 730	Straight forward telescope 0° with parallel eyepiece Enlarged view, Length 273mm With rod lenses optical system Autoclavable With fiber optic light transmission incorporated With 5mm working channel Color code: ■
162 102 740	Straight forward telescope 0° with parallel eyepiece Enlarged view, Length 273mm With rod lenses optical system Autoclavable With fiber optic light transmission incorporated With 6mm working channel Color code: ■

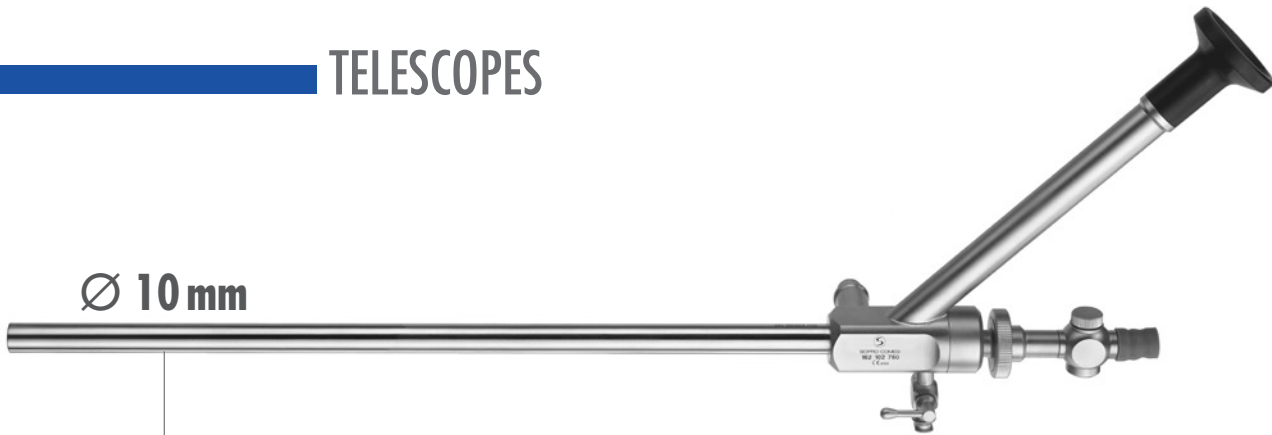


Ø 12 mm

Art.-No.	Description
162 122 771	Straight forward telescope 12° with parallel eyepiece Enlarged view, Length 273mm With rod lenses optical system Autoclavable With fiber optic light transmission incorporated With 7,5mm working channel Color code: ■

2 OPTICS

TELESCOPES



Ø 10 mm

Art.-No.	Description
162 102 760	Straight forward telescope 0° with lateral eyepiece Enlarged view, Length 273mm With rod lenses optical system Autoclavable With fiber optic light transmission incorporated With 6mm working channel Color code: ■



Ø 10 mm

Art.-No.	Description
162 101 702	Thoracoscope Forward oblique telescope 30° wide angle Enlarged view Length 178 mm With rod lenses optical system Autoclavable With fiber optic light transmission incorporated Color code: ■

2 OPTICS

TELESCOPES

∅ 4 mm

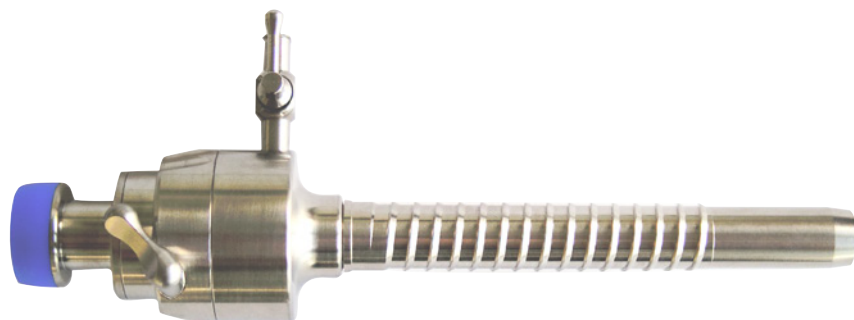


Art.-No.	Description
164 044 510	Straight forward bronchoscope 0° Length 492mm With rod lenses optical system Autoclavable With fiber optic light transmission incorporated Color code: ■

∅ 5,5 mm



Art.-No.	Description
164 053 630	Straight forward bronchoscope 0° Length 363mm With rod lenses optical system Autoclavable With fiber optic light transmission incorporated Color code: ■
164 055 000	Straight forward bronchoscope 0° Length 489mm With rod lenses optical system Autoclavable With fiber optic light transmission incorporated Color code: ■



3 TROCARS

Trocar sleeves	p24
Trocars	p29
Veress insufflation needles	p33
Reducers.....	p35
Dilatation sets	p37

3 TROCARS

TROCAR SLEEVES



Art.-No.	Description
191 031 070	Ø 3.5 mm trocar sleeve with separate opening lever Smooth metal tube One fixed stopcock for insufflation Working length 70 mm For Ø 3 mm outer diameter laparoscopes or instruments
191 051 070	Ø 5.5 mm trocar sleeve with separate opening lever Smooth metal tube One fixed stopcock for insufflation Working length 95 mm For Ø 5 or 5,5 mm outer diameter laparoscopes or instruments
191 051 110	Ø 5.5 mm Trocar sleeve with separate opening lever Smooth metal tube One fixed stopcock for insufflation Working length 150 mm For Ø 5 or 5,5mm outer diameter laparoscopes and instruments
191 071 071	Ø 7 mm Trocar sleeve with separate opening lever Smooth metal tube One fixed stopcock for insufflation Working length 95 mm For Ø 6 mm outer diameter laparoscopes and instruments
191 101 070	Ø 10 mm trocar sleeve with separate opening lever Smooth metal tube One fixed stopcock for insufflation Working length 97 mm For Ø 10 mm outer diameter laparoscopes or instruments
191 111 070	Ø 11 mm trocar sleeve with separate opening lever Smooth metal tube One fixed stopcock for insufflation Working length 101 mm For Ø 10 mm outer diameter laparoscopes or instruments

Art.-No.	Description
191 111 110	Ø 11 mm Trocar sleeve with separate opening lever Smooth metal tube One fixed stopcock for insufflation Working length 150 mm For Ø 10 mm outer diameter laparoscopes and instruments
191 120 070	Ø 12.5 mm trocar sleeve with separate opening lever Smooth metal tube One fixed stopcock for insufflation Working length 98 mm For Ø 12 mm outer diameter laparoscopes or instruments
191 120 110	Ø 12.5 mm Trocar sleeve with separate opening lever Smooth metal tube One fixed stopcock for insufflation Working length 150 mm For Ø 12 mm outer diameter laparoscopes and instruments
191 150 070	Ø 15 mm Trocar sleeve with separate opening lever Smooth metal tube One fixed stopcock for insufflation Working length 110 mm For Ø 15 mm outer diameter laparoscopes and instruments
191 201 070	Ø 20 mm Trocar sleeve with separate opening lever Smooth metal tube One fixed stopcock for insufflation Working length 119 mm For Ø 20 mm outer diameter laparoscopes and instruments

3 TROCARS

TROCAR SLEEVES



Art.-No.	Description
191 051 090	Ø 5.5 mm Trocar sleeve with separate opening lever Metal tube with thread One fixed stopcock for insufflation Working length 95 mm For Ø 5 or 5,5 mm outer diameter laparoscopes and instruments
191 111 090	Ø 11 mm Trocar sleeve with separate opening lever Metal tube with thread One fixed stopcock for insufflation Working length 101 mm For Ø 10 mm outer diameter laparoscopes and instruments
191 120 090	Ø 12.5 mm Trocar sleeve with separate opening lever Metal tube with thread One fixed stopcock for insufflation Working length 98 mm For Ø 12 mm outer diameter laparoscopes and instruments

3 TROCARS

TROCAR SLEEVES



Art.-No.	Description
191 031 080	Ø 3.5 mm Trocar sleeve with silicone valve Smooth metal tube One fixed stopcock for insufflation Working length 70 mm For Ø 3 mm outer diameter laparoscopes and instruments
191 051 080	Ø 5.5 mm Trocar sleeve with silicone valve Smooth metal tube One fixed stopcock for insufflation Working length 95 mm For Ø 5 mm or 5,5 outer diameter laparoscopes and instruments
191 051 120	Ø 5.5 mm Trocar sleeve with silicone valve Smooth metal tube One fixed stopcock for insufflation Working length 150 mm For Ø 5 or 5,5 mm outer diameter laparoscopes and instruments
191 070 080	Ø 7 mm Trocar sleeve with silicone valve Smooth metal tube One fixed stopcock for insufflation Working length 105 mm For Ø 6 mm outer diameter laparoscopes and instruments
191 101 080	Ø 10 mm Trocar sleeve with silicone valve Smooth metal tube One fixed stopcock for insufflation Working length 97 mm For Ø 10 mm outer diameter laparoscopes and instruments

Art.-No.	Description
191 111 080	Ø 11 mm Trocar sleeve with silicone valve Smooth metal tube One fixed stopcock for insufflation Working length 101 mm For Ø 10 mm outer diameter laparoscopes and instruments
191 111 120	Ø 11 mm Trocar sleeve with silicone valve Smooth metal tube One fixed stopcock for insufflation Working length 150 mm For Ø 10 mm outer diameter laparoscopes and instruments
191 120 080	Ø 12.5 mm Trocar sleeve with silicone valve Smooth metal tube One fixed stopcock for insufflation Working length 98 mm For Ø 12 mm outer diameter laparoscopes and instruments
191 120 120	Ø 12.5 mm Trocar sleeve with silicone valve Smooth metal tube One fixed stopcock for insufflation Working length 150 mm For Ø 12 mm outer diameter laparoscopes and instruments

All these references are distributed only outside Germany

3 TROCARS

TROCAR SLEEVES

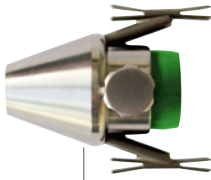


Art.-No.	Description
191 051 100	Ø 5.5 mm Trocar sleeve with silicone valve Metal tube with thread One fixed stopcock for insufflation Working length 95 mm For Ø 5 or 5,5 mm outer diameter laparoscopes and instruments
191 111 100	Ø 11 mm Trocar sleeve with silicone valve Metal tube with thread One fixed stopcock for insufflation Working length 101 mm For Ø 10 mm outer diameter laparoscopes and instruments
191 120 100	Ø 12.5 mm Trocar sleeve with silicone valve Metal tube with thread One fixed stopcock for insufflation Working length 98 mm For Ø 12 mm outer diameter laparoscopes and instruments

All these references are distributed only outside Germany

3 TROCARS

TROCAR SLEEVES



Art.-No.	Description
191 031 940	Hasson cone for Ø 3.5 mm trocar sleeves Suture holder
191 051 940	Hasson cone for Ø 5.5 mm trocar sleeves Suture holder
191 111 940	Hasson cone for Ø 11 mm trocar sleeves Suture holder
191 120 940	Hasson cone for Ø 12.5 mm trocar sleeves Suture holder

3 TROCARS

TROCARS



Art.-No.	Description
191 031 900	Ø 3.5 mm Trocar Conical tip To use with Ø 3.5 mm trocar sleeve
191 051 900	Ø 5.5 mm Trocar Conical tip To use with Ø 5.5 mm trocar sleeve
191 051 980	Ø 5.5 mm Trocar Conical tip To use with Ø 5,5 mm trocar sleeve with 150 mm working length
191 070 900	Ø 7 mm Trocar Conical tip To use with Ø 7 mm trocar sleeve
191 101 900	Ø 10 mm Trocar Conical tip To use with Ø 10 mm trocar sleeve
191 101 980	Ø 10 mm Trocar Conical tip To use with Ø 10 mm trocar sleeve with 150mm working length
191 111 900	Ø 11 mm Trocar Conical tip To use with Ø 11 mm trocar sleeve
191 111 980	Ø 11 mm Trocar Conical tip To use with Ø 11 mm trocar sleeve with 150mm working length
191 120 900	Ø 12.5 mm Trocar Conical tip To use with Ø 12.5 mm trocar sleeve
191 120 980	Ø 12.5 mm Trocar Conical tip Length 150 mm To use with Ø 12,5 mm trocar sleeve with 150mm working length
191 150 900	Ø 15 mm Trocar Conical tip To use with Ø 15 mm trocar sleeve
191 201 911	Ø 20 mm Trocar Conical tip To use with Ø 20 mm trocar sleeve

3 TROCARS

TROCARS



Art.-No.	Description
191 031 910	Ø 3.5 mm Trocar Pyramidal tip To use with Ø 3.5 mm trocar sleeve
191 051 910	Ø 5.5 mm Trocar Pyramidal tip To use with Ø 5.5 mm trocar sleeve
191 051 960	Ø 5.5 mm Trocar Pyramidal tip To use with Ø 5.5 mm trocar sleeve with 150mm working length
191 070 910	Ø 7 mm Trocar Pyramidal tip To use with Ø 7 mm trocar sleeve
191 101 910	Ø 10 mm Trocar Pyramidal tip To use with Ø 10 mm trocar sleeve
191 111 910	Ø 11 mm Trocar Pyramidal tip To use with Ø 11 mm trocar sleeve
191 111 960	Ø 11 mm Trocar Pyramidal tip To use with Ø 11 mm trocar sleeve with 150mm working length
191 120 910	Ø 12.5 mm Trocar Pyramidal tip To use with Ø 12.5 mm trocar sleeve
191 120 960	Ø 12.5 mm Trocar Pyramidal tip To use with Ø 12.5 mm trocar sleeve with 150mm working length
191 150 910	Ø 15 mm Trocar Pyramidal tip To use with Ø 15 mm trocar sleeve
191 201 910	Ø 20 mm Trocar Pyramidal tip To use with Ø 20 mm trocar sleeve

Company

Optics

Trocars

Dissecting and
grasping forcepsScissors
biopsy forcepsInstruments for
coagulationDivers
accessories

Suture and ligature

Sterilization
and maintenance

3 TROCARS

TROCARS



Art.-No.	Description
191 031 930	Ø 3.5 mm Trocar Conical blunt To use with Ø 3.5 mm trocar sleeve
191 051 930	Ø 5.5 mm Trocar Conical blunt To use with Ø 5.5 mm trocar sleeve
191 101 930	Ø 10 mm Trocar Conical blunt To use with Ø 10 mm trocar sleeve
191 111 930	Ø 11 mm Trocar Conical blunt To use with Ø 11 mm trocar sleeve
191 120 930	Ø 12.5 mm Trocar Conical blunt To use with Ø 12.5 mm trocar sleeve



Art.-No.	Description
191 051 950	Ø 5.5 mm Safety trocar with automatic locking Pyramidal grinding and rounded tip Length 160 mm To use with Ø 5.5 mm trocar sleeve
191 051 970	Ø 5.5 mm Safety trocar with automatic locking Pyramidal grinding and rounded tip Length 215 mm To use with Ø 5.5 mm trocar sleeve with 150mm working length
191 101 950	Ø 10 mm Safety trocar with automatic locking Pyramidal grinding and rounded tip Length 167 mm To use with Ø 10 mm trocar sleeve
191 111 950	Ø 11 mm Safety trocar with automatic locking Pyramidal grinding and rounded tip Length 171 mm To use with Ø 11 mm trocar sleeve
191 111 970	Ø 11 mm Safety trocar with automatic locking Pyramidal grinding and rounded tip Length 220 mm To use with Ø 11 mm trocar sleeve with 150mm working length
191 120 950	Ø 12.5 mm Safety trocar with automatic locking Pyramidal grinding and rounded tip Length 171 mm To use with Ø 12.5 mm trocar sleeve
191 120 970	Ø 12.5 mm Safety trocar with automatic locking Pyramidal grinding and rounded tip Length 223 mm To use with Ø 12.5 mm trocar sleeve with 150mm working length

3 TROCARS

TROCARS



Art.-No.	Description
191 051 990	Ø 5.5 mm Protection trocar Halfmoon grinding and oblique tip Length 160 mm To use with Ø 5.5 mm trocar sleeve
191 101 990	Ø 10 mm Protection trocar Halfmoon grinding and oblique tip Length 167 mm To use with Ø 10 mm trocar sleeve
191 111 990	Ø 11 mm Protection trocar Halfmoon grinding and oblique tip Length 171 mm To use with Ø 11 mm trocar sleeve
191 120 990	Ø 12.5 mm Protection trocar Halfmoon grinding and oblique tip Length 171 mm To use with Ø 12.5 mm trocar sleeve

Company

Optics

Trocars

Dissecting and grasping forceps

Scissors biopsy forceps

Instruments for coagulation

Divers accessories

Suture and ligature

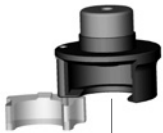
Sterilization and maintenance

3 TROCARS

REDUCERS



Art.-No.	Description
392 998 001	Plastic reducer adaptors Ø 10 mm → Ø 5.5 mm Silicone trap
392 998 002	Plastic reducer adaptors Ø 11 mm → Ø 5.5 mm Silicone trap
392 998 003	Plastic reducer adaptors Ø 12.5 mm → Ø 5.5 mm Silicone trap
392 998 004	Plastic reducer adaptors Ø 12.5 mm → Ø 10 mm Silicone trap



Art.-No.	Description
392 998 005	Plastic sliding reducer adaptors Ø 10 mm → Ø 5.5 mm
392 998 006	Plastic sliding reducer adaptors Ø 11 mm → Ø 5.5 mm
392 998 007	Plastic sliding reducer adaptors Ø 12.5 mm → Ø 5.5 mm
392 998 008	Plastic sliding reducer adaptors Ø 12.5 mm → Ø 10 mm

3 TROCARS

REDUCERS



Art.-No.	Description
392 999 000	Reducer sleeves Ø10 mm → Ø 5.5 mm Length 190 mm
392 999 001	Reducer sleeves Ø11 mm → Ø 5.5 mm Length 190 mm
392 999 002	Reducer sleeves Ø12.5 mm → Ø 5.5 mm Length 190 mm
392 999 003	Reducer sleeves Ø12.5 mm → Ø 10 mm Length 190 mm
392 999 004	Reducer sleeves Ø15 mm → Ø 10 mm Length 190 mm
392 999 005	Reducer sleeves Ø15 mm → Ø 5.5 mm Length 190 mm
392 999 006	Reducer sleeves Ø20 mm → Ø 15 mm Length 190 mm
392 999 007	Reducer sleeves Ø20 mm → Ø 10 mm Length 190 mm
392 999 008	Reducer sleeves Ø20 mm → Ø 5.5 mm Length 190 mm

3 TROCARS

DILATATION SETS



Art.-No.	Description
392 999 100	Ø 5 mm → 10 mm Dilation set Consisting of dilator sleeve dilator Length 6 mm
392 999 111	Ø 5 mm → 11 mm Dilation set Consisting of dilator sleeve dilator Length 6 mm
392 999 101	Ø 5 mm → 15 mm Dilation set Consisting of dilator sleeve dilator Length 6 mm
392 999 103	Ø 5 mm → 20 mm Dilation set Consisting of dilator sleeve dilator Length 6 mm
392 999 102	Ø 10 mm → 15 mm Dilation set Consisting of dilator sleeve dilator Length 95 mm
392 999 104	Ø 10mm → 20 mm Dilation set Consisting of dilator sleeve dilator Length 95 mm

3 TROCARS

VERESS INSUFFLATION NEEDLES



Art.-No.	Description
391 020 070	Ø 2 mm Veress insufflation needle Chrome plated Stopcock and Luer-Lock connection Length 70 mm
391 020 100	Ø 2 mm Veress insufflation needle Chrome plated Stopcock and Luer-Lock connection Length 100 mm
391 020 120	Ø 2 mm Veress insufflation needle Chrome plated Stopcock and Luer-Lock connection Length 120 mm
391 020 140	Ø 2 mm Veress insufflation needle Chrome plated Stopcock and Luer-Lock connection Length 140 mm
391 020 060	Ø 2 mm Veress insufflation needle Chrome plated Stopcock and Luer-Lock connection Length 150 mm
391 027 100	Ø 2.7 mm Veress insufflation needle Chrome plated Stopcock and Luer-Lock connection Length 100 mm
391 027 120	Ø 2.7 mm Veress insufflation needle Chrome plated Stopcock and Luer-Lock connection Length 120 mm
391 027 150	Ø 2.7 mm Veress insufflation needle Chrome plated Stopcock and Luer-Lock connection Length 150 mm
391 027 170	Ø 2.7 mm Veress insufflation needle Chrome plated Stopcock and Luer-Lock connection Length 170 mm

3 TROCARS

VERESS INSUFFLATION NEEDLES



Art.-No.	Description
391 120 100	Ø 2 mm Veress insufflation needle Stainless steel Stopcock and Luer-Lock connection Length 100 mm
391 120 120	Ø 2 mm Veress insufflation needle Stainless steel Stopcock and Luer-Lock connection Length 120 mm
391 120 150	Ø 2 mm Veress insufflation needle Stainless steel Stopcock and Luer-Lock connection Length 150 mm
391 127 100	Ø 2.7 mm Veress insufflation needle Stainless steel Stopcock and Luer-Lock connection Length 100 mm
391 127 120	Ø 2.7 mm Veress insufflation needle Stainless steel Stopcock and Luer-Lock connection Length 120 mm
391 127 150	Ø 2.7 mm Veress insufflation needle Stainless steel Stopcock and Luer-Lock connection Length 150 mm



4 DISSECTING AND GRASPING FORCEPS

Instrumentation	p40
Plastic handles	p41
Metal handles	p42
Tube shafts	p43
Instrumentation Ø 3 mm	p44
Instrumentation Ø 5 mm	p47
Instrumentation Ø 10 mm	p61
Monopolar cables	p66

4 DISSECTING AND GRASPING FORCEPS

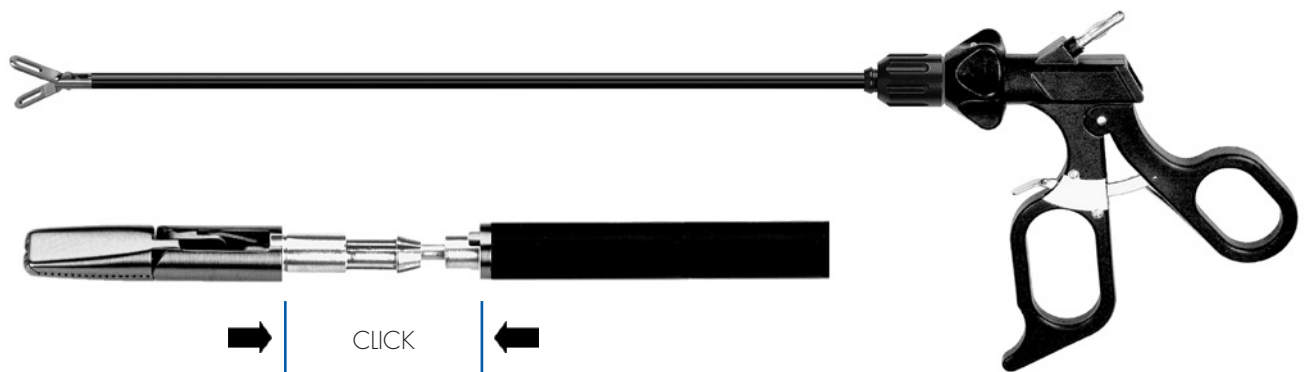
INSTRUMENTATION

Mechanical snap-action coupling

The modular laparoscopic instruments with \varnothing 5 mm and \varnothing 10 mm have a unique snap-action coupling which offers the combined advantage of the speediest possible assembly and a long service life.

The union of the working insert and sleeve shaft is achieved by simply inserting the components axially into each other: A simple click and you are ready!

The groove-and-tongue principle practically rules out the possibility of the locking mechanism coming undone, as it is the case with conventional screw or bayonet connections.



Nut stopper

A nut on the sleeve shaft of our modular instruments prevents bothersome slipping or even the loss of the union nut.



4 DISSECTING AND GRASPING FORCEPS

PLASTIC HANDLES



Art.-No.	Description
393 011 100	Ergonomic highly rigid plastic ring handle with ratchet, rotation module and HF connection



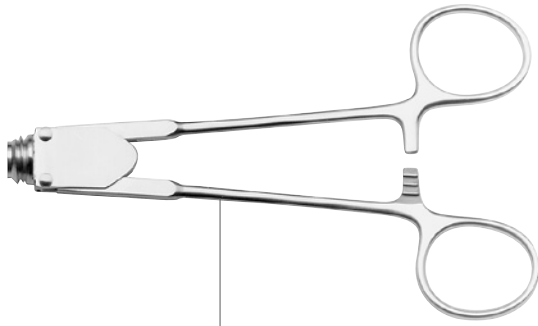
Art.-No.	Description
393 021 100	Ergonomic highly rigid plastic ring handle with rotation module and HF connection



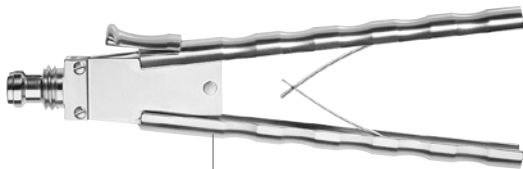
Art.-No.	Description
393 031 100	Ergonomic highly rigid plastic ring handle with stepless ratchet, ratchet releasing key, rotation module and HF connection

4 DISSECTING AND GRASPING FORCEPS

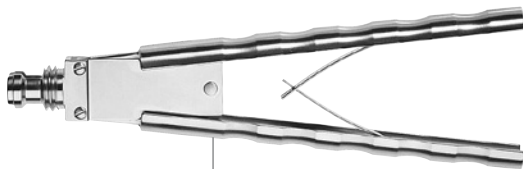
METAL HANDLES



Art.-No.	Description
393 041 100	Axial ring handle, with ratchet



Art.-No.	Description
393 051 100	Axial handle, with spreading spring and ratchet



Art.-No.	Description
393 061 100	Axial handle, with spreading spring

4 DISSECTING AND GRASPING FORCEPS

TUBE SHAFTS



Art.-No.	Description
393 501 100	Ø 5 mm Tube shaft insulated With Luer-Lock Length 330 mm
394 501 200	Ø 5 mm Tube shaft insulated With Luer-Lock Length 450 mm
393 501 300	Ø 5 mm Tube shaft insulated With Luer-Lock Length 360 mm



Art.-No.	Description
393 901 100	Ø 10 mm Tube shaft insulated With Luer-Lock Length 330 mm
394 901 200	Ø 10 mm Tube shaft insulated With Luer-Lock Length 450 mm
393 901 200	Ø 10 mm Tube shaft insulated With Luer-Lock Length 360 mm

4 DISSECTING AND GRASPING FORCEPS

INSTRUMENTATION Ø 3 MM



Ø 3 mm Universal grasping forceps
Double action jaws

Complete instrument	Insert	Handle	Length
393 310 018	393 300 018	393 011 100	210 mm
393 320 018	393 300 018	393 021 100	210 mm
393 330 018	393 300 018	393 031 100	210 mm
393 310 118	393 300 118	393 011 100	180 mm
393 320 118	393 300 118	393 021 100	180 mm
393 330 118	393 300 118	393 031 100	180 mm
393 310 218	393 300 218	393 011 100	330 mm
393 320 218	393 300 218	393 021 100	330 mm
393 330 218	393 300 218	393 031 100	330 mm



Ø 3 mm Maryland grasping forceps
Double action jaws

Complete instrument	Insert	Handle	Length
393 310 043	393 300 043	393 011 100	210 mm
393 320 043	393 300 043	393 021 100	210 mm
393 330 043	393 300 043	393 031 100	210 mm
393 310 143	393 300 143	393 011 100	180 mm
393 320 143	393 300 143	393 021 100	180 mm
393 330 143	393 300 143	393 031 100	180 mm
393 310 243	393 300 243	393 011 100	330 mm
393 320 243	393 300 243	393 021 100	330 mm
393 330 243	393 300 243	393 031 100	330 mm



Ø 3 mm Dissecting forceps, fenestrated
Double action jaws

Complete instrument	Insert	Handle	Length
393 310 034	393 300 034	393 011 100	210 mm
393 320 034	393 300 034	393 021 100	210 mm
393 330 034	393 300 034	393 031 100	210 mm
393 310 134	393 300 134	393 011 100	180 mm
393 320 134	393 300 134	393 021 100	180 mm
393 330 134	393 300 134	393 031 100	180 mm
393 310 234	393 300 234	393 011 100	330 mm
393 320 234	393 300 234	393 021 100	330 mm
393 330 234	393 300 234	393 031 100	330 mm

4 DISSECTING AND GRASPING FORCEPS

INSTRUMENTATION Ø 3 MM



Ø 3 mm Grasping forceps with reservoir, blunt
Double action jaws

Complete instrument	Insert	Handle	Length
393 310 010	393 300 010	393 011 100	210 mm
393 320 010	393 300 010	393 021 100	210 mm
393 330 010	393 300 010	393 031 100	210 mm
393 310 110	393 300 110	393 011 100	180 mm
393 320 110	393 300 110	393 021 100	180 mm
393 330 110	393 300 110	393 031 100	180 mm
393 310 210	393 300 210	393 011 100	330 mm
393 320 210	393 300 210	393 021 100	330 mm
393 330 210	393 300 210	393 031 100	330 mm



Ø 3 mm Grasping forceps with reservoir, sharp
Double action jaws

Complete instrument	Insert	Handle	Length
393 310 011	393 300 011	393 011 100	210 mm
393 320 011	393 300 011	393 021 100	210 mm
393 330 011	393 300 011	393 031 100	210 mm
393 310 111	393 300 111	393 011 100	180 mm
393 320 111	393 300 111	393 021 100	180 mm
393 330 111	393 300 111	393 031 100	180 mm
393 310 211	393 300 211	393 011 100	330 mm
393 320 211	393 300 211	393 021 100	330 mm
393 330 211	393 300 211	393 031 100	330 mm



Ø 3 mm Dolphin grasping forceps
Double action jaws

Complete instrument	Insert	Handle	Length
393 310 024	393 300 024	393 011 100	210 mm
393 320 024	393 300 024	393 021 100	210 mm
393 330 024	393 300 024	393 031 100	210 mm
393 310 124	393 300 124	393 011 100	180 mm
393 320 124	393 300 124	393 021 100	180 mm
393 330 124	393 300 124	393 031 100	180 mm
393 310 224	393 300 224	393 011 100	330 mm
393 320 224	393 300 224	393 021 100	330 mm
393 330 224	393 300 224	393 031 100	330 mm

4 DISSECTING AND GRASPING FORCEPS

INSTRUMENTATION Ø 3 MM



Ø 3 mm Grasping forceps, sharp, crosswise teeth

Jaw length 12 mm
Double action jaws

Complete instrument	Insert	Handle	Length
393 310 019	393 300 019	393 011 100	210 mm
393 320 019	393 300 019	393 021 100	210 mm
393 330 019	393 300 019	393 031 100	210 mm
393 310 119	393 300 119	393 011 100	180 mm
393 320 119	393 300 119	393 021 100	180 mm
393 330 119	393 300 119	393 031 100	180 mm
393 310 219	393 300 219	393 011 100	330 mm
393 320 219	393 300 219	393 021 100	330 mm
393 330 219	393 300 219	393 031 100	330 mm



Ø 3 mm Claw grasping and extracting forceps

2 + 3 teeth
Single action jaws

Complete instrument	Insert	Handle	Length
393 310 001	393 300 001	393 011 100	210 mm
393 320 001	393 300 001	393 021 100	210 mm
393 330 001	393 300 001	393 031 100	210 mm
393 310 101	393 300 101	393 011 100	180 mm
393 320 101	393 300 101	393 021 100	180 mm
393 330 101	393 300 101	393 031 100	180 mm
393 310 201	393 300 201	393 011 100	330 mm
393 320 201	393 300 201	393 021 100	330 mm
393 330 201	393 300 201	393 031 100	330 mm

4 DISSECTING AND GRASPING FORCEPS

INSTRUMENTATION Ø 5 MM



Ø 5 mm Claw grasping and extracting forceps

2 + 3 teeth
Single action jaws

Complete instrument	Insert	Tube	Handle	Length
393 510 001	393 500 001	393 501 100	393 011 100	330 mm
393 520 001	393 500 001	393 501 100	393 021 100	330 mm
393 530 001	393 500 001	393 501 100	393 031 100	330 mm
393 510 101	393 500 101	393 501 300	393 011 100	360 mm
393 520 101	393 500 101	393 501 300	393 021 100	360 mm
393 530 101	393 500 101	393 501 300	393 031 100	360 mm
394 510 001	394 500 001	394 501 200	393 011 100	450 mm
394 520 001	394 500 001	394 501 200	393 021 100	450 mm
394 530 001	394 500 001	394 501 200	393 031 100	450 mm



Ø 5 mm Grasping forceps

2 + 4 teeth
Double action jaws

Complete instrument	Insert	Tube	Handle	Length
393 510 005	393 500 005	393 501 100	393 011 100	330 mm
393 520 005	393 500 005	393 501 100	393 021 100	330 mm
393 530 005	393 500 005	393 501 100	393 031 100	330 mm
393 510 105	393 500 105	393 501 300	393 011 100	360 mm
393 520 105	393 500 105	393 501 300	393 021 100	360 mm
393 530 105	393 500 105	393 501 300	393 031 100	360 mm
394 510 005	394 500 005	394 501 200	393 011 100	450 mm
394 520 005	394 500 005	394 501 200	393 021 100	450 mm
394 530 005	394 500 005	394 501 200	393 031 100	450 mm



Ø 5 mm Grasping forceps

Double action jaws

Complete instrument	Insert	Tube	Handle	Length
393 510 012	393 500 012	393 501 100	393 011 100	330 mm
393 520 012	393 500 012	393 501 100	393 021 100	330 mm
393 530 012	393 500 012	393 501 100	393 031 100	330 mm
393 510 112	393 500 112	393 501 300	393 011 100	360 mm
393 520 112	393 500 112	393 501 300	393 021 100	360 mm
393 530 112	393 500 112	393 501 300	393 031 100	360 mm
394 510 012	394 500 012	394 501 200	393 011 100	450 mm
394 520 012	394 500 012	394 501 200	393 021 100	450 mm
394 530 012	394 500 012	394 501 200	393 031 100	450 mm

4 DISSECTING AND GRASPING FORCEPS

INSTRUMENTATION Ø 5 MM



Ø 5 mm Extracting forceps with a row of retrograde teeth

Double action jaws

Complete instrument	Insert	Tube	Handle	Length
393 510 014	393 500 014	393 501 100	393 011 100	330 mm
393 520 014	393 500 014	393 501 100	393 021 100	330 mm
393 530 014	393 500 014	393 501 100	393 031 100	330 mm
393 510 114	393 500 114	393 501 300	393 011 100	360 mm
393 520 114	393 500 114	393 501 300	393 021 100	360 mm
393 530 114	393 500 114	393 501 300	393 031 100	360 mm
394 510 014	394 500 014	394 501 200	393 011 100	450 mm
394 520 014	394 500 014	394 501 200	393 021 100	450 mm
394 530 014	394 500 014	394 501 200	393 031 100	450 mm



Ø 5 mm Universal grasping forceps

Double action jaws

Complete instrument	Insert	Tube	Handle	Length
393 510 018	393 500 018	393 501 100	393 011 100	330 mm
393 520 018	393 500 018	393 501 100	393 021 100	330 mm
393 530 018	393 500 018	393 501 100	393 031 100	330 mm
393 510 118	393 500 118	393 501 300	393 011 100	360 mm
393 520 118	393 500 118	393 501 300	393 021 100	360 mm
393 530 118	393 500 118	393 501 300	393 031 100	360 mm
394 510 018	394 500 018	394 501 200	393 011 100	450 mm
394 520 018	394 500 018	394 501 200	393 021 100	450 mm
394 530 018	394 500 018	394 501 200	393 031 100	450 mm



Ø 5 mm Grasping Forceps distal with a row teeth

Single action jaws

Complete instrument	Insert	Tube	Handle	Length
393 510 030	393 500 030	393 501 100	393 011 100	330 mm
393 520 030	393 500 030	393 501 100	393 021 100	330 mm
393 530 030	393 500 030	393 501 100	393 031 100	330 mm
393 510 130	393 500 130	393 501 300	393 011 100	360 mm
393 520 130	393 500 130	393 501 300	393 021 100	360 mm
393 530 130	393 500 130	393 501 300	393 031 100	360 mm
394 510 030	394 500 030	394 501 200	393 011 100	450 mm
394 520 030	394 500 030	394 501 200	393 021 100	450 mm
394 530 030	394 500 030	394 501 200	393 031 100	450 mm

4 DISSECTING AND GRASPING FORCEPS

INSTRUMENTATION Ø 5 MM



Ø 5 mm Grasping forceps smooth
Double action jaws

Complete instrument	Insert	Tube	Handle	Length
393 510 009	393 500 009	393 501 100	393 011 100	330 mm
393 520 009	393 500 009	393 501 100	393 021 100	330 mm
393 530 009	393 500 009	393 501 100	393 031 100	330 mm
393 510 109	393 500 109	393 501 300	393 011 100	360 mm
393 520 109	393 500 109	393 501 300	393 021 100	360 mm
393 530 109	393 500 109	393 501 300	393 031 100	360 mm
394 510 009	394 500 009	394 501 200	393 011 100	450 mm
394 520 009	394 500 009	394 501 200	393 021 100	450 mm
394 530 009	394 500 009	394 501 200	393 031 100	450 mm



Ø 5 mm Grasping forceps, sharp, crosswise teeth
Jaw length 18 mm
Double action jaws

Complete instrument	Insert	Tube	Handle	Length
393 510 020	393 500 020	393 501 100	393 011 100	330 mm
393 520 020	393 500 020	393 501 100	393 021 100	330 mm
393 530 020	393 500 020	393 501 100	393 031 100	330 mm
393 510 120	393 500 120	393 501 300	393 011 100	360 mm
393 520 120	393 500 120	393 501 300	393 021 100	360 mm
393 530 120	393 500 120	393 501 300	393 031 100	360 mm
394 510 020	394 500 020	394 501 200	393 011 100	450 mm
394 520 020	394 500 020	394 501 200	393 021 100	450 mm
394 530 020	394 500 020	394 501 200	393 031 100	450 mm



Ø 5 mm Grasping forceps, sharp, crosswise teeth
Jaw length 14 mm
Double action jaws

Complete instrument	Insert	Tube	Handle	Length
393 510 019	393 500 019	393 501 100	393 011 100	330 mm
393 520 019	393 500 019	393 501 100	393 021 100	330 mm
393 530 019	393 500 019	393 501 100	393 031 100	330 mm
393 510 119	393 500 119	393 501 300	393 011 100	360 mm
393 520 119	393 500 119	393 501 300	393 021 100	360 mm
393 530 119	393 500 119	393 501 300	393 031 100	360 mm
394 510 019	394 500 019	394 501 200	393 011 100	450 mm
394 520 019	394 500 019	394 501 200	393 021 100	450 mm
394 530 019	394 500 019	394 501 200	393 031 100	450 mm

4 DISSECTING AND GRASPING FORCEPS

INSTRUMENTATION Ø 5 MM



Ø 5 mm Maryland grasping forceps

Double action jaws

Complete instrument	Insert	Tube	Handle	Length
393 510 042	393 500 042	393 501 100	393 011 100	330 mm
393 520 042	393 500 042	393 501 100	393 021 100	330 mm
393 530 042	393 500 042	393 501 100	393 031 100	330 mm
393 510 142	393 500 142	393 501 300	393 011 100	360 mm
393 520 142	393 500 142	393 501 300	393 021 100	360 mm
393 530 142	393 500 142	393 501 300	393 031 100	360 mm
394 510 042	394 500 042	394 501 200	393 011 100	450 mm
394 520 042	394 500 042	394 501 200	393 021 100	450 mm
394 530 042	394 500 042	394 501 200	393 031 100	450 mm



Ø 5 mm Kelly grasping forceps

Double action jaws

Complete instrument	Insert	Tube	Handle	Length
393 510 043	393 500 043	393 501 100	393 011 100	330 mm
393 520 043	393 500 043	393 501 100	393 021 100	330 mm
393 530 043	393 500 043	393 501 100	393 031 100	330 mm
393 510 143	393 500 143	393 501 300	393 011 100	360 mm
393 520 143	393 500 143	393 501 300	393 021 100	360 mm
393 530 143	393 500 143	393 501 300	393 031 100	360 mm
394 510 043	394 500 043	394 501 200	393 011 100	450 mm
394 520 043	394 500 043	394 501 200	393 021 100	450 mm
394 530 043	394 500 043	394 501 200	393 031 100	450 mm



Ø 5 mm Dolphin grasping forceps

Double action jaws

Complete instrument	Insert	Tube	Handle	Length
393 510 024	393 500 024	393 501 100	393 011 100	330 mm
393 520 024	393 500 024	393 501 100	393 021 100	330 mm
393 530 024	393 500 024	393 501 100	393 031 100	330 mm
393 510 124	393 500 124	393 501 300	393 011 100	360 mm
393 520 124	393 500 124	393 501 300	393 021 100	360 mm
393 530 124	393 500 124	393 501 300	393 031 100	360 mm
394 510 024	394 500 024	394 501 200	393 011 100	450 mm
394 520 024	394 500 024	394 501 200	393 021 100	450 mm
394 530 024	394 500 024	394 501 200	393 031 100	450 mm

4 DISSECTING AND GRASPING FORCEPS

INSTRUMENTATION Ø 5 MM



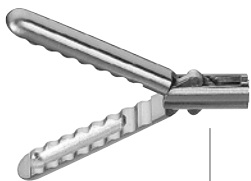
Ø 5 mm Dolphin grasping forceps long, with reservoir
Double action jaws

Complete instrument	Insert	Tube	Handle	Length
393 510 069	393 500 069	393 501 100	393 011 100	330 mm
393 520 069	393 500 069	393 501 100	393 021 100	330 mm
393 530 069	393 500 069	393 501 100	393 031 100	330 mm
393 510 169	393 500 169	393 501 300	393 011 100	360 mm
393 520 169	393 500 169	393 501 300	393 021 100	360 mm
393 530 169	393 500 169	393 501 300	393 031 100	360 mm
394 510 069	394 500 069	394 501 200	393 011 100	450 mm
394 520 069	394 500 069	394 501 200	393 021 100	450 mm
394 530 069	394 500 069	394 501 200	393 031 100	450 mm



Ø 5 mm Atraumatic grasping forceps, with wavy teeth and reservoir
Single action jaws

Complete instrument	Insert	Tube	Handle	Length
393 510 028	393 500 028	393 501 100	393 011 100	330 mm
393 520 028	393 500 028	393 501 100	393 021 100	330 mm
393 530 028	393 500 028	393 501 100	393 031 100	330 mm
393 510 128	393 500 128	393 501 300	393 011 100	360 mm
393 520 128	393 500 128	393 501 300	393 021 100	360 mm
393 530 128	393 500 128	393 501 300	393 031 100	360 mm
394 510 028	394 500 028	394 501 200	393 011 100	450 mm
394 520 028	394 500 028	394 501 200	393 021 100	450 mm
394 530 028	394 500 028	394 501 200	393 031 100	450 mm



Ø 5 mm Atraumatic grasping forceps, with wavy teeth and reservoir
Double action jaws

Complete instrument	Insert	Tube	Handle	Length
393 510 029	393 500 029	393 501 100	393 011 100	330 mm
393 520 029	393 500 029	393 501 100	393 021 100	330 mm
393 530 029	393 500 029	393 501 100	393 031 100	330 mm
393 510 129	393 500 129	393 501 300	393 011 100	360 mm
393 520 129	393 500 129	393 501 300	393 021 100	360 mm
393 530 129	393 500 129	393 501 300	393 031 100	360 mm
394 510 029	394 500 029	394 501 200	393 011 100	450 mm
394 520 029	394 500 029	394 501 200	393 021 100	450 mm
394 530 029	394 500 029	394 501 200	393 031 100	450 mm

4 DISSECTING AND GRASPING FORCEPS

INSTRUMENTATION Ø 5 MM



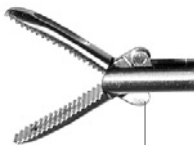
Ø 5 mm Grasping forceps with reservoir, blunt
Double action jaws

Complete instrument	Insert	Tube	Handle	Length
393 510 010	393 500 010	393 501 100	393 011 100	330 mm
393 520 010	393 500 010	393 501 100	393 021 100	330 mm
393 530 010	393 500 010	393 501 100	393 031 100	330 mm
393 510 110	393 500 110	393 501 300	393 011 100	360 mm
393 520 110	393 500 110	393 501 300	393 021 100	360 mm
393 530 110	393 500 110	393 501 300	393 031 100	360 mm
394 510 010	394 500 010	394 501 200	393 011 100	450 mm
394 520 010	394 500 010	394 501 200	393 021 100	450 mm
394 530 010	394 500 010	394 501 200	393 031 100	450 mm



Ø 5 mm Grasping forceps with reservoir, sharp
Double action jaws

Complete instrument	Insert	Tube	Handle	Length
393 510 011	393 500 011	393 501 100	393 011 100	330 mm
393 520 011	393 500 011	393 501 100	393 021 100	330 mm
393 530 011	393 500 011	393 501 100	393 031 100	330 mm
393 510 111	393 500 111	393 501 300	393 011 100	360 mm
393 520 111	393 500 111	393 501 300	393 021 100	360 mm
393 530 111	393 500 111	393 501 300	393 031 100	360 mm
394 510 011	394 500 011	394 501 200	393 011 100	450 mm
394 520 011	394 500 011	394 501 200	393 021 100	450 mm
394 530 011	394 500 011	394 501 200	393 031 100	450 mm



Ø 5 mm Dissecting forceps, fenestrated, slim
Double action jaws

Complete instrument	Insert	Tube	Handle	Length
393 510 031	393 500 031	393 501 100	393 011 100	330 mm
393 520 031	393 500 031	393 501 100	393 021 100	330 mm
393 530 031	393 500 031	393 501 100	393 031 100	330 mm
393 510 131	393 500 131	393 501 300	393 011 100	360 mm
393 520 131	393 500 131	393 501 300	393 021 100	360 mm
393 530 131	393 500 131	393 501 300	393 031 100	360 mm
394 510 031	394 500 031	394 501 200	393 011 100	450 mm
394 520 031	394 500 031	394 501 200	393 021 100	450 mm
394 530 031	394 500 031	394 501 200	393 031 100	450 mm

4 DISSECTING AND GRASPING FORCEPS

INSTRUMENTATION Ø 5 MM



Ø 5 mm Dissecting forceps fenestrated
Double action jaws

Complete instrument	Insert	Tube	Handle	Length
393 510 033	393 500 033	393 501 100	393 011 100	330 mm
393 520 033	393 500 033	393 501 100	393 021 100	330 mm
393 530 033	393 500 033	393 501 100	393 031 100	330 mm
393 510 133	393 500 133	393 501 300	393 011 100	360 mm
393 520 133	393 500 133	393 501 300	393 021 100	360 mm
393 530 133	393 500 133	393 501 300	393 031 100	360 mm
394 510 033	394 500 033	394 501 200	393 011 100	450 mm
394 520 033	394 500 033	394 501 200	393 021 100	450 mm
394 530 033	394 500 033	394 501 200	393 031 100	450 mm



Ø 5 mm Dissecting forceps fenestrated
Double action jaws

Complete instrument	Insert	Tube	Handle	Length
393 510 034	393 500 034	393 501 100	393 011 100	330 mm
393 520 034	393 500 034	393 501 100	393 021 100	330 mm
393 530 034	393 500 034	393 501 100	393 031 100	330 mm
393 510 134	393 500 134	393 501 300	393 011 100	360 mm
393 520 134	393 500 134	393 501 300	393 021 100	360 mm
393 530 134	393 500 134	393 501 300	393 031 100	360 mm
394 510 034	394 500 034	394 501 200	393 011 100	450 mm
394 520 034	394 500 034	394 501 200	393 021 100	450 mm
394 530 034	394 500 034	394 501 200	393 031 100	450 mm

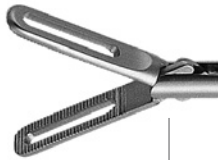


Ø 5 mm Duck-Bill grasping forceps fenestrated
Single action jaws

Complete instrument	Insert	Tube	Handle	Length
393 510 035	393 500 035	393 501 100	393 011 100	330 mm
393 520 035	393 500 035	393 501 100	393 021 100	330 mm
393 530 035	393 500 035	393 501 100	393 031 100	330 mm
393 510 135	393 500 135	393 501 300	393 011 100	360 mm
393 520 135	393 500 135	393 501 300	393 021 100	360 mm
393 530 135	393 500 135	393 501 300	393 031 100	360 mm
394 510 035	394 500 035	394 501 200	393 011 100	450 mm
394 520 035	394 500 035	394 501 200	393 021 100	450 mm
394 530 035	394 500 035	394 501 200	393 031 100	450 mm

4 DISSECTING AND GRASPING FORCEPS

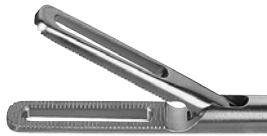
INSTRUMENTATION Ø 5 MM



Ø 5 mm Dorsey grasping forceps fenestrated

Jaw length 20 mm
Double action jaws

Complete instrument	Insert	Tube	Handle	Length
393 510 032	393 500 032	393 501 100	393 011 100	330 mm
393 520 032	393 500 032	393 501 100	393 021 100	330 mm
393 530 032	393 500 032	393 501 100	393 031 100	330 mm
393 510 132	393 500 132	393 501 300	393 011 100	360 mm
393 520 132	393 500 132	393 501 300	393 021 100	360 mm
393 530 132	393 500 132	393 501 300	393 031 100	360 mm
394 510 032	394 500 032	394 501 200	393 011 100	450 mm
394 520 032	394 500 032	394 501 200	393 021 100	450 mm
394 530 032	394 500 032	394 501 200	393 031 100	450 mm



Ø 5 mm Dorsey grasping forceps fenestrated

Jaw length 20 mm
Single action jaws

Complete instrument	Insert	Tube	Handle	Length
393 510 036	393 500 036	393 501 100	393 011 100	330 mm
393 520 036	393 500 036	393 501 100	393 021 100	330 mm
393 530 036	393 500 036	393 501 100	393 031 100	330 mm
393 510 136	393 500 136	393 501 300	393 011 100	360 mm
393 520 136	393 500 136	393 501 300	393 021 100	360 mm
393 530 136	393 500 136	393 501 300	393 031 100	360 mm
394 510 036	394 500 036	394 501 200	393 011 100	450 mm
394 520 036	394 500 036	394 501 200	393 021 100	450 mm
394 530 036	394 500 036	394 501 200	393 031 100	450 mm



Ø 5 mm Dorsey grasping forceps fenestrated

Jaw length 40 mm
Double action jaws

Complete instrument	Insert	Tube	Handle	Length
393 510 039	393 500 039	393 501 100	393 011 100	330 mm
393 520 039	393 500 039	393 501 100	393 021 100	330 mm
393 530 039	393 500 039	393 501 100	393 031 100	330 mm
393 510 139	393 500 139	393 501 300	393 011 100	360 mm
393 520 139	393 500 139	393 501 300	393 021 100	360 mm
393 530 139	393 500 139	393 501 300	393 031 100	360 mm
394 510 039	394 500 039	394 501 200	393 011 100	450 mm
394 520 039	394 500 039	394 501 200	393 021 100	450 mm
394 530 039	394 500 039	394 501 200	393 031 100	450 mm

4 DISSECTING AND GRASPING FORCEPS

INSTRUMENTATION Ø 5 MM



Ø 5 mm Mixer grasping forceps 90°
Double action jaws

Complete instrument	Insert	Tube	Handle	Length
393 510 008	393 500 008	393 501 100	393 011 100	330 mm
393 520 008	393 500 008	393 501 100	393 021 100	330 mm
393 530 008	393 500 008	393 501 100	393 031 100	330 mm
393 510 108	393 500 108	393 501 300	393 011 100	360 mm
393 520 108	393 500 108	393 501 300	393 021 100	360 mm
393 530 108	393 500 108	393 501 300	393 031 100	360 mm
394 510 008	394 500 008	394 501 200	393 011 100	450 mm
394 520 008	394 500 008	394 501 200	393 021 100	450 mm
394 530 008	394 500 008	394 501 200	393 031 100	450 mm



Ø 5 mm Mixer grasping forceps 45°
Double action jaws

Complete instrument	Insert	Tube	Handle	Length
393 510 077	393 500 077	393 501 100	393 011 100	330 mm
393 520 077	393 500 077	393 501 100	393 021 100	330 mm
393 530 077	393 500 077	393 501 100	393 031 100	330 mm
393 510 177	393 500 177	393 501 300	393 011 100	360 mm
393 520 177	393 500 177	393 501 300	393 021 100	360 mm
393 530 177	393 500 177	393 501 300	393 031 100	360 mm
394 510 077	394 500 077	394 501 200	393 011 100	450 mm
394 520 077	394 500 077	394 501 200	393 021 100	450 mm
394 530 077	394 500 077	394 501 200	393 031 100	450 mm



Ø 5 mm Grasping forceps with De Bakey teeth
Double action jaws

Complete instrument	Insert	Tube	Handle	Length
393 510 038	393 500 038	393 501 100	393 011 100	330 mm
393 520 038	393 500 038	393 501 100	393 021 100	330 mm
393 530 038	393 500 038	393 501 100	393 031 100	330 mm
393 510 138	393 500 138	393 501 300	393 011 100	360 mm
393 520 138	393 500 138	393 501 300	393 021 100	360 mm
393 530 138	393 500 138	393 501 300	393 031 100	360 mm
394 510 038	394 500 038	394 501 200	393 011 100	450 mm
394 520 038	394 500 038	394 501 200	393 021 100	450 mm
394 530 038	394 500 038	394 501 200	393 031 100	450 mm

4 DISSECTING AND GRASPING FORCEPS

INSTRUMENTATION Ø 5 MM



Ø 5 mm De Bakey clamp

Jaw length 30 mm
Double action jaws

Complete instrument	Insert	Tube	Handle	Length
393 510 037	393 500 037	393 501 100	393 011 100	330 mm
393 520 037	393 500 037	393 501 100	393 021 100	330 mm
393 530 037	393 500 037	393 501 100	393 031 100	330 mm
393 510 137	393 500 137	393 501 300	393 011 100	360 mm
393 520 137	393 500 137	393 501 300	393 021 100	360 mm
393 530 137	393 500 137	393 501 300	393 031 100	360 mm
394 510 037	394 500 037	394 501 200	393 011 100	450 mm
394 520 037	394 500 037	394 501 200	393 021 100	450 mm
394 530 037	394 500 037	394 501 200	393 031 100	450 mm



Ø 5 mm Babcock clamp

Double action jaws

Complete instrument	Insert	Tube	Handle	Length
393 510 045	393 500 045	393 501 100	393 011 100	330 mm
393 520 045	393 500 045	393 501 100	393 021 100	330 mm
393 530 045	393 500 045	393 501 100	393 031 100	330 mm
393 510 145	393 500 145	393 501 300	393 011 100	360 mm
393 520 145	393 500 145	393 501 300	393 021 100	360 mm
393 530 145	393 500 145	393 501 300	393 031 100	360 mm
394 510 045	394 500 045	394 501 200	393 011 100	450 mm
394 520 045	394 500 045	394 501 200	393 021 100	450 mm
394 530 045	394 500 045	394 501 200	393 031 100	450 mm



Ø 5 mm Maxigrip grasping forceps

Double action jaws

Complete instrument	Insert	Tube	Handle	Length
393 510 070	393 500 070	393 501 100	393 011 100	330 mm
393 520 070	393 500 070	393 501 100	393 021 100	330 mm
393 530 070	393 500 070	393 501 100	393 031 100	330 mm
393 510 170	393 500 170	393 501 300	393 011 100	360 mm
393 520 170	393 500 170	393 501 300	393 021 100	360 mm
393 530 170	393 500 170	393 501 300	393 031 100	360 mm
394 510 070	394 500 070	394 501 200	393 011 100	450 mm
394 520 070	394 500 070	394 501 200	393 021 100	450 mm
394 530 070	394 500 070	394 501 200	393 031 100	450 mm

4 DISSECTING AND GRASPING FORCEPS

INSTRUMENTATION Ø 5 MM



Ø 5 mm Grasping forceps

2 + 4 teeth
Single action jaws

Complete instrument	Insert	Tube	Handle	Length
393 510 071	393 500 071	393 501 100	393 011 100	330 mm
393 520 071	393 500 071	393 501 100	393 021 100	330 mm
393 530 071	393 500 071	393 501 100	393 031 100	330 mm
393 510 171	393 500 171	393 501 300	393 011 100	360 mm
393 520 171	393 500 171	393 501 300	393 021 100	360 mm
393 530 171	393 500 171	393 501 300	393 031 100	360 mm
394 510 071	394 500 071	394 501 200	393 011 100	450 mm
394 520 071	394 500 071	394 501 200	393 021 100	450 mm
394 530 071	394 500 071	394 501 200	393 031 100	450 mm



Ø 5 mm Grasping forceps distal with row of teeth

Double action jaws

Complete instrument	Insert	Tube	Handle	Length
393 510 072	393 500 072	393 501 100	393 011 100	330 mm
393 520 072	393 500 072	393 501 100	393 021 100	330 mm
393 530 072	393 500 072	393 501 100	393 031 100	330 mm
393 510 172	393 500 172	393 501 300	393 011 100	360 mm
393 520 172	393 500 172	393 501 300	393 021 100	360 mm
393 530 172	393 500 172	393 501 300	393 031 100	360 mm
394 510 072	394 500 072	394 501 200	393 011 100	450 mm
394 520 072	394 500 072	394 501 200	393 021 100	450 mm
394 530 072	394 500 072	394 501 200	393 031 100	450 mm



Ø 5 mm Grasping forceps

Double action jaws

Complete instrument	Insert	Tube	Handle	Length
393 510 073	393 500 073	393 501 100	393 011 100	330 mm
393 520 073	393 500 073	393 501 100	393 021 100	330 mm
393 530 073	393 500 073	393 501 100	393 031 100	330 mm
393 510 173	393 500 173	393 501 300	393 011 100	360 mm
393 520 173	393 500 173	393 501 300	393 021 100	360 mm
393 530 173	393 500 173	393 501 300	393 031 100	360 mm
394 510 073	394 500 073	394 501 200	393 011 100	450 mm
394 520 073	394 500 073	394 501 200	393 021 100	450 mm
394 530 073	394 500 073	394 501 200	393 031 100	450 mm

4 DISSECTING AND GRASPING FORCEPS

INSTRUMENTATION Ø 5 MM



Ø 5 mm Grasping forceps with fine crosswise teeth
Double action jaws

Complete instrument	Insert	Tube	Handle	Length
393 510 074	393 500 074	393 501 100	393 011 100	330 mm
393 520 074	393 500 074	393 501 100	393 021 100	330 mm
393 530 074	393 500 074	393 501 100	393 031 100	330 mm
393 510 174	393 500 174	393 501 300	393 011 100	360 mm
393 520 174	393 500 174	393 501 300	393 021 100	360 mm
393 530 174	393 500 174	393 501 300	393 031 100	360 mm
394 510 074	394 500 074	394 501 200	393 011 100	450 mm
394 520 074	394 500 074	394 501 200	393 021 100	450 mm
394 530 074	394 500 074	394 501 200	393 031 100	450 mm



Ø 5 mm Grasping forceps with mouse teeth
Double action jaws

Complete instrument	Insert	Tube	Handle	Length
393 510 075	393 500 075	393 501 100	393 011 100	330 mm
393 520 075	393 500 075	393 501 100	393 021 100	330 mm
393 530 075	393 500 075	393 501 100	393 031 100	330 mm
393 510 175	393 500 175	393 501 300	393 011 100	360 mm
393 520 175	393 500 175	393 501 300	393 021 100	360 mm
393 530 175	393 500 175	393 501 300	393 031 100	360 mm
394 510 075	394 500 075	394 501 200	393 011 100	450 mm
394 520 075	394 500 075	394 501 200	393 021 100	450 mm
394 530 075	394 500 075	394 501 200	393 031 100	450 mm



Ø 5 mm Grasping forceps with mouse teeth
Single action jaws

Complete instrument	Insert	Tube	Handle	Length
393 510 076	393 500 076	393 501 100	393 011 100	330 mm
393 520 076	393 500 076	393 501 100	393 021 100	330 mm
393 530 076	393 500 076	393 501 100	393 031 100	330 mm
393 510 176	393 500 176	393 501 300	393 011 100	360 mm
393 520 176	393 500 176	393 501 300	393 021 100	360 mm
393 530 176	393 500 176	393 501 300	393 031 100	360 mm
394 510 076	394 500 076	394 501 200	393 011 100	450 mm
394 520 076	394 500 076	394 501 200	393 021 100	450 mm
394 530 076	394 500 076	394 501 200	393 031 100	450 mm

4 DISSECTING AND GRASPING FORCEPS

INSTRUMENTATION Ø 5 MM



Ø 5 mm Tenaculum grasping forceps
Double action jaws

Complete instrument	Insert	Tube	Handle	Length
393 510 078	393 500 078	393 501 100	393 011 100	330 mm
393 520 078	393 500 078	393 501 100	393 021 100	330 mm
393 530 078	393 500 078	393 501 100	393 031 100	330 mm
393 510 178	393 500 178	393 501 300	393 011 100	360 mm
393 520 178	393 500 178	393 501 300	393 021 100	360 mm
393 530 178	393 500 178	393 501 300	393 031 100	360 mm
394 510 078	394 500 078	394 501 200	393 011 100	450 mm
394 520 078	394 500 078	394 501 200	393 021 100	450 mm
394 530 078	394 500 078	394 501 200	393 031 100	450 mm



Ø 5 mm Aggressiv claw grasping forceps
Double action jaws

Complete instrument	Insert	Tube	Handle	Length
393 510 079	393 500 079	393 501 100	393 011 100	330 mm
393 520 079	393 500 079	393 501 100	393 021 100	330 mm
393 530 079	393 500 079	393 501 100	393 031 100	330 mm
393 510 179	393 500 179	393 501 300	393 011 100	360 mm
393 520 179	393 500 179	393 501 300	393 021 100	360 mm
393 530 179	393 500 179	393 501 300	393 031 100	360 mm
394 510 079	394 500 079	394 501 200	393 011 100	450 mm
394 520 079	394 500 079	394 501 200	393 021 100	450 mm
394 530 079	394 500 079	394 501 200	393 031 100	450 mm



Ø 5 mm Alligator grasping forceps
Double action jaws

Complete instrument	Insert	Tube	Handle	Length
393 510 015	393 500 015	393 501 100	393 011 100	330 mm
393 520 015	393 500 015	393 501 100	393 021 100	330 mm
393 530 015	393 500 015	393 501 100	393 031 100	330 mm
393 510 115	393 500 115	393 501 300	393 011 100	360 mm
393 520 115	393 500 115	393 501 300	393 021 100	360 mm
393 530 115	393 500 115	393 501 300	393 031 100	360 mm
394 510 015	394 500 015	394 501 200	393 011 100	450 mm
394 520 015	394 500 015	394 501 200	393 021 100	450 mm
394 530 015	394 500 015	394 501 200	393 031 100	450 mm

4 DISSECTING AND GRASPING FORCEPS

INSTRUMENTATION Ø 5 MM



Ø 5mm Wave grasping forceps fenestrated
Double action jaws

Complete instrument	Insert	Tube	Handle	Length
393 510 080	393 500 080	393 501 100	393 011 100	330 mm
393 520 080	393 500 080	393 501 100	393 021 100	330 mm
393 530 080	393 500 080	393 501 100	393 031 100	330 mm
393 510 180	393 500 180	393 501 300	393 011 100	360 mm
393 520 180	393 500 180	393 501 300	393 021 100	360 mm
393 530 180	393 500 180	393 501 300	393 031 100	360 mm
394 510 080	394 500 080	394 501 200	393 011 100	450 mm
394 520 080	394 500 080	394 501 200	393 021 100	450 mm
394 530 080	394 500 080	394 501 200	393 031 100	450 mm

4 DISSECTING AND GRASPING FORCEPS

INSTRUMENTATION Ø 10 MM



Ø 10 mm Claw grasping and extracting forceps

2 + 3 teeth
Single action jaws

Complete instrument	Insert	Tube	Handle	Length
393 910 001	393 900 001	393 901 100	393 011 100	330 mm
393 920 001	393 900 001	393 901 100	393 021 100	330 mm
393 930 001	393 900 001	393 901 100	393 031 100	330 mm
393 910 101	393 900 101	393 901 200	393 011 100	360 mm
393 920 101	393 900 101	393 901 200	393 021 100	360 mm
393 930 101	393 900 101	393 901 200	393 031 100	360 mm
393 910 201	393 900 201	394 901 200	393 011 100	450 mm
393 920 201	393 900 201	394 901 200	393 021 100	450 mm
393 930 201	393 900 201	394 901 200	393 031 100	450 mm



Ø 10 mm Maryland grasping forceps

Double action jaws

Complete instrument	Insert	Tube	Handle	Length
393 910 005	393 900 005	393 901 100	393 011 100	330 mm
393 920 005	393 900 005	393 901 100	393 021 100	330 mm
393 930 005	393 900 005	393 901 100	393 031 100	330 mm
393 910 105	393 900 105	393 901 200	393 011 100	360 mm
393 920 105	393 900 105	393 901 200	393 021 100	360 mm
393 930 105	393 900 105	393 901 200	393 031 100	360 mm
393 910 245	393 901 245	394 901 200	393 011 100	450 mm
393 920 245	393 901 245	394 901 200	393 021 100	450 mm
393 930 245	393 901 245	394 901 200	393 031 100	450 mm



Ø 10 mm Mixer grasping forceps 90°

Double action jaws

Complete instrument	Insert	Tube	Handle	Length
393 910 008	393 900 008	393 901 100	393 011 100	330 mm
393 920 008	393 900 008	393 901 100	393 021 100	330 mm
393 930 008	393 900 008	393 901 100	393 031 100	330 mm
393 910 108	393 900 108	393 901 200	393 011 100	360 mm
393 920 108	393 900 108	393 901 200	393 021 100	360 mm
393 930 108	393 900 108	393 901 200	393 031 100	360 mm
393 910 208	393 901 208	394 901 200	393 011 100	450 mm
393 920 208	393 901 208	394 901 200	393 021 100	450 mm
393 930 208	393 901 208	394 901 200	393 031 100	450 mm

4 DISSECTING AND GRASPING FORCEPS

INSTRUMENTATION Ø 10 MM



Ø 10 mm Dorsey grasping forceps
Double action jaws

Complete instrument	Insert	Tube	Handle	Length
393 910 032	393 900 032	393 901 100	393 011 100	330 mm
393 920 032	393 900 032	393 901 100	393 021 100	330 mm
393 930 032	393 900 032	393 901 100	393 031 100	330 mm
393 910 132	393 900 132	393 901 200	393 011 100	360 mm
393 920 132	393 900 132	393 901 200	393 021 100	360 mm
393 930 132	393 900 132	393 901 200	393 031 100	360 mm
393 910 232	393 901 232	394 901 200	393 011 100	450 mm
393 920 232	393 901 232	394 901 200	393 021 100	450 mm
393 930 232	393 901 232	394 901 200	393 031 100	450 mm



Ø 10 mm Grasping forceps with De Bakey teeth, fenestrated
Double action jaws

Complete instrument	Insert	Tube	Handle	Length
393 910 038	393 900 038	393 901 100	393 011 100	330 mm
393 920 038	393 900 038	393 901 100	393 021 100	330 mm
393 930 038	393 900 038	393 901 100	393 031 100	330 mm
393 910 138	393 900 138	393 901 200	393 011 100	360 mm
393 920 138	393 900 138	393 901 200	393 021 100	360 mm
393 930 138	393 900 138	393 901 200	393 031 100	360 mm
393 910 238	393 901 238	394 901 200	393 011 100	450 mm
393 920 238	393 901 238	394 901 200	393 021 100	450 mm
393 930 238	393 901 238	394 901 200	393 031 100	450 mm



Ø 10 mm Babcock grasping forceps, with crosswise teeth
Double action jaws

Complete instrument	Insert	Tube	Handle	Length
393 910 074	393 900 074	393 901 100	393 011 100	330 mm
393 920 074	393 900 074	393 901 100	393 021 100	330 mm
393 930 074	393 900 074	393 901 100	393 031 100	330 mm
393 910 174	393 900 174	393 901 200	393 011 100	360 mm
393 920 174	393 900 174	393 901 200	393 021 100	360 mm
393 930 174	393 900 174	393 901 200	393 031 100	360 mm
393 910 274	393 901 274	394 901 200	393 011 100	450 mm
393 920 274	393 901 274	394 901 200	393 021 100	450 mm
393 930 274	393 901 274	394 901 200	393 031 100	450 mm

4 DISSECTING AND GRASPING FORCEPS

INSTRUMENTATION Ø 10 MM



Ø 10 mm De Bakey clamp, double teeth

Jaw length 40 mm
Double action jaws

Complete instrument	Insert	Tube	Handle	Length
393 910 037	393 900 037	393 901 100	393 011 100	330 mm
393 920 037	393 900 037	393 901 100	393 021 100	330 mm
393 930 037	393 900 037	393 901 100	393 031 100	330 mm
393 910 137	393 900 137	393 901 200	393 011 100	360 mm
393 920 137	393 900 137	393 901 200	393 021 100	360 mm
393 930 137	393 900 137	393 901 200	393 031 100	360 mm
393 910 237	393 901 237	394 901 200	393 011 100	450 mm
393 920 237	393 901 237	394 901 200	393 021 100	450 mm
393 930 237	393 901 237	394 901 200	393 031 100	450 mm



Ø 10 mm Babcock clamp

Double action jaws

Complete instrument	Insert	Tube	Handle	Length
393 910 073	393 900 073	393 901 100	393 011 100	330 mm
393 920 073	393 900 073	393 901 100	393 021 100	330 mm
393 930 073	393 900 073	393 901 100	393 031 100	330 mm
393 910 173	393 900 173	393 901 200	393 011 100	360 mm
393 920 173	393 900 173	393 901 200	393 021 100	360 mm
393 930 173	393 900 173	393 901 200	393 031 100	360 mm
393 910 273	393 901 273	394 901 200	393 011 100	450 mm
393 920 273	393 901 273	394 901 200	393 021 100	450 mm
393 930 273	393 901 273	394 901 200	393 031 100	450 mm



Ø 10 mm Babcock grasping forceps

Double action jaws

Complete instrument	Insert	Tube	Handle	Length
393 910 041	393 900 041	393 901 100	393 011 100	330 mm
393 920 041	393 900 041	393 901 100	393 021 100	330 mm
393 930 041	393 900 041	393 901 100	393 031 100	330 mm
393 910 141	393 900 141	393 901 200	393 011 100	360 mm
393 920 141	393 900 141	393 901 200	393 021 100	360 mm
393 930 141	393 900 141	393 901 200	393 031 100	360 mm
393 910 241	393 901 241	394 901 200	393 011 100	450 mm
393 920 241	393 901 241	394 901 200	393 021 100	450 mm
393 930 241	393 901 241	394 901 200	393 031 100	450 mm

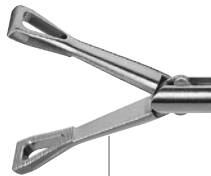
4 DISSECTING AND GRASPING FORCEPS

INSTRUMENTATION Ø 10 MM



Ø 10 mm Collin clamp
Double action jaws

Complete instrument	Insert	Tube	Handle	Length
393 910 035	393 900 035	393 901 100	393 011 100	330 mm
393 920 035	393 900 035	393 901 100	393 021 100	330 mm
393 930 035	393 900 035	393 901 100	393 031 100	330 mm
393 910 135	393 900 135	393 901 200	393 011 100	360 mm
393 920 135	393 900 135	393 901 200	393 021 100	360 mm
393 930 135	393 900 135	393 901 200	393 031 100	360 mm
393 910 235	393 901 235	394 901 200	393 011 100	450 mm
393 920 235	393 901 235	394 901 200	393 021 100	450 mm
393 930 235	393 901 235	394 901 200	393 031 100	450 mm



Ø 10 mm Pennington
Double action jaws

Complete instrument	Insert	Tube	Handle	Length
393 910 031	393 900 031	393 901 100	393 011 100	330 mm
393 920 031	393 900 031	393 901 100	393 021 100	330 mm
393 930 031	393 900 031	393 901 100	393 031 100	330 mm
393 910 131	393 900 131	393 901 200	393 011 100	360 mm
393 920 131	393 900 131	393 901 200	393 021 100	360 mm
393 930 131	393 900 131	393 901 200	393 031 100	360 mm
393 910 231	393 901 231	394 901 200	393 011 100	450 mm
393 920 231	393 901 231	394 901 200	393 021 100	450 mm
393 930 231	393 901 231	394 901 200	393 031 100	450 mm



Ø 10 mm Maryland grasping forceps

Complete instrument	Insert	Tube	Handle	Length
393 910 005	393 900 005	393 901 100	393 011 100	330 mm
393 920 005	393 900 005	393 901 100	393 021 100	330 mm
393 930 005	393 900 005	393 901 100	393 031 100	330 mm
393 910 105	393 900 105	393 901 200	393 011 100	360 mm
393 920 105	393 900 105	393 901 200	393 021 100	360 mm
393 930 105	393 900 105	393 901 200	393 031 100	360 mm
393 910 205	393 900 205	394 901 200	393 011 100	450 mm
393 920 205	393 900 205	394 901 200	393 021 100	450 mm
393 930 205	393 900 205	394 901 200	393 031 100	450 mm

4 DISSECTING AND GRASPING FORCEPS

INSTRUMENTATION Ø 10 MM



Ø 10 mm Claw with fine teeth, curved

Complete instrument	Insert	Tube	Handle	Length
393 910 043	393 900 043	393 901 100	393 011 100	330 mm
393 920 043	393 900 043	393 901 100	393 021 100	330 mm
393 930 043	393 900 043	393 901 100	393 031 100	330 mm
393 910 143	393 900 143	393 901 200	393 011 100	360 mm
393 920 143	393 900 143	393 901 200	393 021 100	360 mm
393 930 143	393 900 143	393 901 200	393 031 100	360 mm
393 910 243	393 900 243	394 901 200	393 011 100	450 mm
393 920 243	393 900 243	394 901 200	393 021 100	450 mm
393 930 243	393 900 243	394 901 200	393 031 100	450 mm



Ø 10 mm Tenaculum forceps

Complete instrument	Insert	Tube	Handle	Length
393 910 078	393 900 078	393 901 100	393 011 100	330 mm
393 920 078	393 900 078	393 901 100	393 021 100	330 mm
393 930 078	393 900 078	393 901 100	393 031 100	330 mm
393 910 178	393 900 178	393 901 200	393 011 100	360 mm
393 920 178	393 900 178	393 901 200	393 021 100	360 mm
393 930 178	393 900 178	393 901 200	393 031 100	360 mm
393 910 278	393 900 278	394 901 200	393 011 100	450 mm
393 920 278	393 900 278	394 901 200	393 021 100	450 mm
393 930 278	393 900 278	394 901 200	393 031 100	450 mm

4 DISSECTING AND GRASPING FORCEPS

MONOPOLAR CABLES



Art.-No.	Description
395 502 500	Monopolar High frequency cable 3m length For SOPRO-COMEG monopolar electrodes and forceps To connect with electro surgery units model ERBE T-serie
395 502 501	Monopolar High frequency cable 5m length For SOPRO-COMEG monopolar electrodes and forceps to connect with electro surgery units model ERBE T-serie
395 502 502	Monopolar High frequency cable 3m length For SOPRO-COMEG monopolar electrodes and forceps To connect with electro surgery units model ERBE ACC and ICC



Art.-No.	Description
395 502 503	Monopolar High frequency cable 3m length For SOPRO-COMEG monopolar electrodes and forceps To connect with electro surgery units model MARTIN and BERCHTOLD
395 502 504	Monopolar High frequency cable 5m length For SOPRO-COMEG monopolar electrodes and forceps To connect with electro surgery units model MARTIN and BERCHTOLD



Art.-No.	Description
395 502 505	Monopolar High frequency cable 3m length For SOPRO-COMEG monopolar electrodes and forceps To connect with electro surgery units model VALLEYLAB and CONMED
395 502 506	Monopolar High frequency cable 5m length For SOPRO-COMEG monopolar electrodes and forceps To connect with electro surgery units model VALLEYLAB and CONMED



Art.-No.	Description
395 502 507	Monopolar High frequency cable 3m length For SOPRO-COMEG monopolar electrodes and forceps To connect with electro surgery units model VARIOUS GENERATORS
395 502 508	Monopolar High frequency cable 5m length For SOPRO-COMEG monopolar electrodes and forceps To connect with electro surgery units model VARIOUS GENERATORS



5 SCISSORS, BIOPSY FORCEPS

Plastic handles	p70
Metal handles	p71
Tube shafts	p72
Instrumentation Ø 3 mm	p73
Instrumentation Ø 5 mm	p75
Instrumentation Ø 10 mm	p78
Monopolar cables	p79

5 SCISSORS BIOPSY FORCEPS

PLASTIC HANDLES



Art.-No.	Description
393 011 100	Ergonomic highly rigid plastic ring handle with ratchet, rotation module and HF connection



Art.-No.	Description
393 021 100	Ergonomic highly rigid plastic ring handle with rotation module and HF connection



Art.-No.	Description
393 031 100	Ergonomic highly rigid plastic ring handle with stepless ratchet, ratchet releasing key, rotation module and HF connection

Company

Optics

Trocars

Dissecting and grasping forceps

Scissors biopsy forceps

Instruments for coagulation

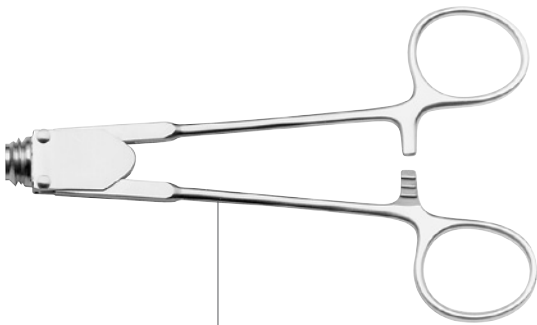
Divers accessories

Suture and ligature

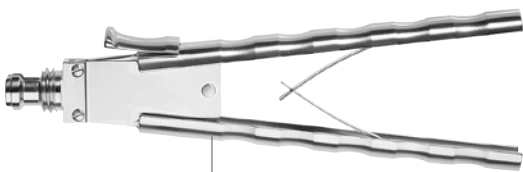
Sterilization and maintenance

5 SCISSORS BIOPSY FORCEPS

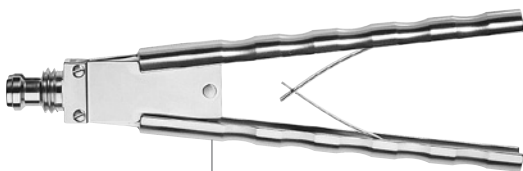
METAL HANDLES



Art.-No.	Description
393 041 100	Axial ring handle, with ratchet



Art.-No.	Description
393 051 100	Axial handle, with spreading spring and ratchet



Art.-No.	Description
393 061 100	Axial handle, with spreading spring

5 SCISSORS BIOPSY FORCEPS

TUBE SHAFTS



Art.-No.	Description
393 501 100	Ø 5 mm Tube shaft insulated With Luer-Lock Length 330 mm
394 501 200	Ø 5 mm Tube shaft insulated With Luer-Lock Length 450 mm
393 501 300	Ø 5 mm Tube shaft insulated With Luer-Lock Length 360 mm



Art.-No.	Description
393 901 100	Ø 10 mm Tube shaft insulated With Luer-Lock Length 330 mm
394 901 200	Ø 10 mm Tube shaft insulated With Luer-Lock Length 450 mm
393 901 200	Ø 10 mm Tube shaft insulated With Luer-Lock Length 360 mm

5 SCISSORS BIOPSY FORCEPS

INSTRUMENTATION Ø 3 MM



Ø 3 mm Metzenbaum scissors, straight

Double action jaws

Complete instrument	Insert	Handle	Length
393 310 150	393 300 150	393 011 100	180 mm
393 360 150	393 300 150	393 061 100	180 mm
393 310 050	393 300 050	393 011 100	210 mm
393 360 050	393 300 050	393 061 100	210 mm
393 310 250	393 300 250	393 011 100	330 mm
393 360 250	393 300 250	393 061 100	330 mm



Ø 3 mm Peritoneal scissors, straight

Single action jaws

Complete instrument	Insert	Handle	Length
393 310 161	393 300 161	393 011 100	180 mm
393 360 161	393 300 161	393 061 100	180 mm
393 310 061	393 300 061	393 011 100	210 mm
393 360 061	393 300 061	393 061 100	210 mm
393 310 261	393 300 261	393 011 100	330 mm
393 360 261	393 300 261	393 061 100	330 mm



Ø 3 mm Hook scissors

Single action jaws

Complete instrument	Insert	Handle	Length
393 310 165	393 300 165	393 011 100	180 mm
393 360 165	393 300 165	393 061 100	180 mm
393 310 065	393 300 065	393 011 100	210 mm
393 360 065	393 300 065	393 061 100	210 mm
393 310 265	393 300 265	393 011 100	330 mm
393 360 265	393 300 265	393 061 100	330 mm



Ø 3 mm Micro scissors straight

Single action jaws

Complete instrument	Insert	Handle	Length
393 310 103	393 300 103	393 011 100	180 mm
393 360 103	393 300 103	393 061 100	180 mm
393 310 003	393 300 003	393 011 100	210 mm
393 360 003	393 300 003	393 061 100	210 mm
393 310 203	393 300 203	393 011 100	330 mm
393 360 203	393 300 203	393 061 100	330 mm

5 SCISSORS BIOPSY FORCEPS

INSTRUMENTATION Ø 3 MM



Ø 3mm Biopsy cup with thorn

Double action jaws

Complete instrument	Insert	Handle	Length
393 310 106	393 300 106	393 011 100	180 mm
393 320 106	393 300 106	393 021 100	180 mm
393 330 106	393 300 106	393 031 100	180 mm
393 310 006	393 300 006	393 011 100	210 mm
393 320 006	393 300 006	393 021 100	210 mm
393 330 006	393 300 006	393 031 100	210 mm
393 310 206	393 300 206	393 011 100	330 mm
393 320 206	393 300 206	393 021 100	330 mm
393 330 206	393 300 206	393 031 100	330 mm



Ø 3mm Metzenbaum scissors, curved

Double action jaws

Complete instrument	Insert	Handle	Length
393 310 151	393 300 151	393 011 100	180 mm
393 360 151	393 300 151	393 061 100	180 mm
393 310 051	393 300 051	393 011 100	210 mm
393 360 051	393 300 051	393 061 100	210 mm
393 310 251	393 300 251	393 011 100	330 mm
393 360 251	393 300 251	393 061 100	330 mm



Ø 3mm Biopsy cup without thorn

Double action jaws

Complete instrument	Insert	Handle	Length
393 310 107	393 300 107	393 011 100	180 mm
393 320 107	393 300 107	393 021 100	180 mm
393 330 107	393 300 107	393 031 100	180 mm
393 310 007	393 300 007	393 011 100	210 mm
393 320 007	393 300 007	393 021 100	210 mm
393 330 007	393 300 007	393 031 100	210 mm
393 310 207	393 300 207	393 011 100	330 mm
393 320 207	393 300 207	393 021 100	330 mm
393 330 207	393 300 207	393 031 100	330 mm

5 SCISSORS BIOPSY FORCEPS

INSTRUMENTATION Ø 5 MM



Ø 5 mm Metzenbaum scissors, straight
Double action jaws

Complete instrument	Insert	Tube	Handle	Length
393 510 050	393 500 050	393 501 100	393 011 100	330 mm
393 560 050	393 500 050	393 501 100	393 061 100	330 mm
393 510 150	393 500 150	393 501 300	393 011 100	360 mm
393 560 150	393 500 150	393 501 300	393 061 100	360 mm
394 510 050	394 500 050	394 501 200	393 011 100	450 mm
394 560 050	394 500 050	394 501 200	393 061 100	450 mm



Ø 5 mm Metzenbaum scissors, curved
Double action jaws

Complete instrument	Insert	Tube	Handle	Length
393 510 051	393 500 051	393 501 100	393 011 100	330 mm
393 560 051	393 500 051	393 501 100	393 061 100	330 mm
393 510 151	393 500 151	393 501 300	393 011 100	360 mm
393 560 151	393 500 151	393 501 300	393 061 100	360 mm
394 510 051	394 500 051	394 501 200	393 011 100	450 mm
394 560 051	394 500 051	394 501 200	393 061 100	450 mm



Ø 5 mm Peritoneal scissors, straight
Single action jaws

Complete instrument	Insert	Tube	Handle	Length
393 510 061	393 500 061	393 501 100	393 011 100	330 mm
393 560 061	393 500 061	393 501 100	393 061 100	330 mm
393 510 161	393 500 161	393 501 300	393 011 100	360 mm
393 560 161	393 500 161	393 501 300	393 061 100	360 mm
394 510 061	394 500 061	394 501 200	393 011 100	450 mm
394 560 061	394 500 061	394 501 200	393 061 100	450 mm

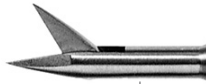


Ø 5 mm Hook scissors
Single action jaws

Complete instrument	Insert	Tube	Handle	Length
393 510 065	393 500 065	393 501 100	393 011 100	330 mm
393 560 065	393 500 065	393 501 100	393 061 100	330 mm
393 510 165	393 500 165	393 501 300	393 011 100	360 mm
393 560 165	393 500 165	393 501 300	393 061 100	360 mm
394 510 065	394 500 065	394 501 200	393 011 100	450 mm
394 560 065	394 500 065	394 501 200	393 061 100	450 mm

5 SCISSORS BIOPSY FORCEPS

INSTRUMENTATION Ø 5 MM



Ø 5 mm Micro scissors straight
Single action jaw

Complete instrument	Insert	Tube	Handle	Length
393 510 003	393 500 003	393 501 100	393 011 100	330 mm
393 560 003	393 500 003	393 501 100	393 061 100	330 mm
393 510 103	393 500 103	393 501 300	393 011 100	360 mm
393 560 103	393 500 103	393 501 300	393 061 100	360 mm
394 510 003	394 500 003	394 501 200	393 011 100	450 mm
394 560 003	394 500 003	394 501 200	393 061 100	450 mm



Ø 5 mm Biopsy cup without thorn
Double action jaws

Complete instrument	Insert	Tube	Handle	Length
393 510 007	393 500 007	393 501 100	393 011 100	330 mm
393 520 007	393 500 007	393 501 100	393 021 100	330 mm
393 530 007	393 500 007	393 501 100	393 031 100	330 mm
393 510 107	393 500 107	393 501 300	393 011 100	360 mm
393 520 107	393 500 107	393 501 300	393 021 100	360 mm
393 530 107	393 500 107	393 501 300	393 031 100	360 mm
394 510 007	394 500 007	394 501 200	393 011 100	450 mm
394 520 007	394 500 007	394 501 200	393 021 100	450 mm
394 530 007	394 500 007	394 501 200	393 031 100	450 mm



Ø 5 mm Biopsy cup with thorn
Double action jaws

Complete instrument	Insert	Tube	Handle	Length
393 510 006	393 500 006	393 501 100	393 011 100	330 mm
393 520 006	393 500 006	393 501 100	393 021 100	330 mm
393 530 006	393 500 006	393 501 100	393 031 100	330 mm
393 510 106	393 500 106	393 501 300	393 011 100	360 mm
393 520 106	393 500 106	393 501 300	393 021 100	360 mm
393 530 106	393 500 106	393 501 300	393 031 100	360 mm
394 510 006	394 500 006	394 501 200	393 011 100	450 mm
394 520 006	394 500 006	394 501 200	393 021 100	450 mm
394 530 006	394 500 006	394 501 200	393 031 100	450 mm

5 SCISSORS BIOPSY FORCEPS

INSTRUMENTATION Ø 5 MM



Ø 5 mm Biopsy punch without thorn
Single action jaw

Complete instrument	Insert	Tube	Handle	Length
393 510 068	393 500 068	393 501 100	393 011 100	330 mm
393 520 068	393 500 068	393 501 100	393 021 100	330 mm
393 530 068	393 500 068	393 501 100	393 031 100	330 mm
393 510 168	393 500 168	393 501 300	393 011 100	360 mm
393 520 168	393 500 168	393 501 300	393 021 100	360 mm
393 530 168	393 500 168	393 501 300	393 031 100	360 mm
394 510 068	394 500 068	394 501 200	393 011 100	450 mm
394 520 068	394 500 068	394 501 200	393 021 100	450 mm
394 530 068	394 500 068	394 501 200	393 031 100	450 mm

5 SCISSORS BIOPSY FORCEPS

INSTRUMENTATION Ø 10 MM



Ø 10 mm Large OP scissors

Single action jaws

Complete instrument	Insert	Tube	Handle	Length
393 910 002	393 900 002	393 901 100	393 011 100	330 mm
393 960 002	393 900 002	393 901 100	393 061 100	330 mm
393 910 102	393 900 102	393 901 200	393 061 100	360 mm
393 960 102	393 900 102	393 901 200	393 061 100	360 mm
393 910 202	393 900 202	394 901 200	393 011 100	450 mm
393 960 202	393 900 202	394 901 200	393 061 100	450 mm



Ø 10 mm Large cup biopsy forceps

Single action jaws

Complete instrument	Insert	Tube	Handle	Length
393 910 072	393 900 072	393 901 100	393 011 100	330 mm
393 920 072	393 900 072	393 901 100	393 021 100	330 mm
393 930 072	393 900 072	393 901 100	393 031 100	330 mm
393 910 172	393 900 172	393 901 200	393 011 100	360 mm
393 920 172	393 900 172	393 901 200	393 021 100	360 mm
393 930 172	393 900 172	393 901 200	393 031 100	360 mm
393 910 272	393 900 272	394 901 200	393 011 100	450 mm
393 920 272	393 900 272	394 901 200	393 021 100	450 mm
393 930 272	393 900 272	394 901 200	393 031 100	450 mm

5 SCISSORS BIOPSY FORCEPS

MONOPOLAR CABLES



Art.-No.	Description
395 502 500	Monopolar High frequency cable 3m length For SOPRO-COMEG monopolar electrodes and forceps To connect with electro surgery units model ERBE T-serie
395 502 501	Monopolar High frequency cable 5m length For SOPRO-COMEG monopolar electrodes and forceps to connect with electro surgery units model ERBE T-serie
395 502 502	Monopolar High frequency cable 3m length For SOPRO-COMEG monopolar electrodes and forceps To connect with electro surgery units model ERBE ACC and ICC



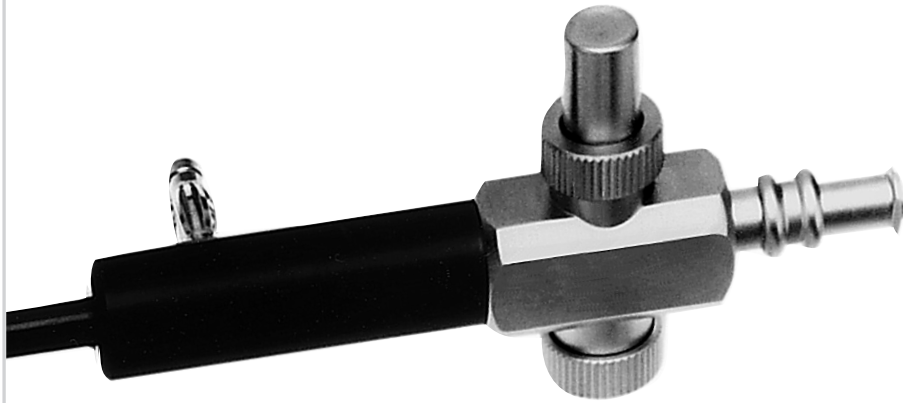
Art.-No.	Description
395 502 503	Monopolar High frequency cable 3m length For SOPRO-COMEG monopolar electrodes and forceps To connect with electro surgery units model MARTIN and BERCHTOLD
395 502 504	Monopolar High frequency cable 5m length For SOPRO-COMEG monopolar electrodes and forceps To connect with electro surgery units model MARTIN and BERCHTOLD



Art.-No.	Description
395 502 505	Monopolar High frequency cable 3m length For SOPRO-COMEG monopolar electrodes and forceps To connect with electro surgery units model VALLEYLAB and CONMED
395 502 506	Monopolar High frequency cable 5m length For SOPRO-COMEG monopolar electrodes and forceps To connect with electro surgery units model VALLEYLAB and CONMED



Art.-No.	Description
395 502 507	Monopolar High frequency cable 3m length For SOPRO-COMEG monopolar electrodes and forceps To connect with electro surgery units model VARIOUS GENERATORS
395 502 508	Monopolar High frequency cable 5m length For SOPRO-COMEG monopolar electrodes and forceps To connect with electro surgery units model VARIOUS GENERATORS



6 INSTRUMENTS FOR MONOPOLAR AND BIPOLAR COAGULATION

Monopolar electrodes	p82
Monopolar cables	p85
Bipolar electrodes	p86
Bipolar coagulation forceps, scissors and dissectors . .	p88
Bipolar cables	p91

6 INSTRUMENTS FOR COAGULATION

MONOPOLAR ELECTRODES



Art.-No.	Description
392 999 500	Ø 5 mm Button electrode 330 mm length
392 999 510	Ø 5 mm Button electrode 450 mm length



Art.-No.	Description
392 999 502	Ø 5 mm Hook electrode 330 mm length
392 999 512	Ø 5 mm Hook electrode 450 mm length



Art.-No.	Description
392 999 503	Ø 5 mm, 90° Hook electrode 330 mm length
392 999 513	Ø 5 mm, 90° Hook electrode 450 mm length



Art.-No.	Description
392 999 504	Ø 5 mm Needle electrode 330 mm length
392 999 514	Ø 5 mm Needle electrode 450 mm length



Art.-No.	Description
392 999 505	Ø 5 mm Spatula electrode 330 mm length
392 999 515	Ø 5 mm Spatula electrode 450 mm length

6 INSTRUMENTS FOR COAGULATION

MONOPOLAR ELECTRODES



Monopolar suction electrodes



Art.-No.	Description
392 999 600	Ø 5 mm Button electrode 330 mm length
392 999 657	Ø 5 mm Button electrode 360 mm length
392 999 610	Ø 5 mm Button electrode 450 mm length



Art.-No.	Description
392 999 602	Ø 5 mm Hook electrode 330 mm length
392 999 658	Ø 5 mm Hook electrode 360 mm length
392 999 612	Ø 5 mm Hook electrode 450 mm length



Art.-No.	Description
392 999 603	Ø 5 mm, 90° Hook electrode 330 mm length
392 999 659	Ø 5 mm, 90° Hook electrode 360 mm length
392 999 613	Ø 5 mm, 90° Hook electrode 450 mm length



Art.-No.	Description
392 999 604	Ø 5 mm Needle electrode 330 mm length
392 999 614	Ø 5 mm Needle electrode 450 mm length



Art.-No.	Description
392 999 606	Ø 5 mm Spatula electrode 330 mm length
392 999 616	Ø 5 mm Spatula electrode 450 mm length

6 INSTRUMENTS FOR COAGULATION

MONOPOLAR ELECTRODES



Art.-No.	Description
392 999 900	Ø 5 mm Button electrode 330 mm length
392 999 910	Ø 5 mm Button electrode 450 mm length



Art.-No.	Description
392 999 902	Ø 5 mm Hook electrode 330 mm length
392 999 912	Ø 5 mm Hook electrode 450 mm length



Art.-No.	Description
392 999 903	Ø 5 mm, 90° Hook electrode 330 mm length
392 999 913	Ø 5 mm, 90° Hook electrode 450 mm length



Art.-No.	Description
392 999 904	Ø 5 mm Needle electrode 330 mm length
392 999 914	Ø 5 mm Needle electrode 450 mm length



Art.-No.	Description
392 999 905	Ø 5 mm Spatula electrode 330 mm length
392 999 915	Ø 5 mm Spatula electrode 450 mm length

6 INSTRUMENTS FOR COAGULATION

MONOPOLAR CABLES



Art.-No.	Description
395 502 500	Monopolar High frequency cable 3m length For SOPRO-COMEG monopolar electrodes and forceps To connect with electro surgery units model ERBE T-serie
395 502 501	Monopolar High frequency cable 5m length For SOPRO-COMEG monopolar electrodes and forceps to connect with electro surgery units model ERBE T-serie
395 502 502	Monopolar High frequency cable 3m length For SOPRO-COMEG monopolar electrodes and forceps To connect with electro surgery units model ERBE ACC and ICC



Art.-No.	Description
395 502 503	Monopolar High frequency cable 3m length For SOPRO-COMEG monopolar electrodes and forceps To connect with electro surgery units model MARTIN and BERCHTOLD
395 502 504	Monopolar High frequency cable 5m length For SOPRO-COMEG monopolar electrodes and forceps To connect with electro surgery units model MARTIN and BERCHTOLD



Art.-No.	Description
395 502 505	Monopolar High frequency cable 3m length For SOPRO-COMEG monopolar electrodes and forceps To connect with electro surgery units model VALLEYLAB and CONMED
395 502 506	Monopolar High frequency cable 5m length For SOPRO-COMEG monopolar electrodes and forceps To connect with electro surgery units model VALLEYLAB and CONMED



Art.-No.	Description
395 502 507	Monopolar High frequency cable 3m length For SOPRO-COMEG monopolar electrodes and forceps To connect with electro surgery units model VARIOUS GENERATORS
395 502 508	Monopolar High frequency cable 5m length For SOPRO-COMEG monopolar electrodes and forceps To connect with electro surgery units model VARIOUS GENERATORS

6 INSTRUMENTS FOR COAGULATION

BIPOLAR ELECTRODES



Coagulation instruments with a diameter of only 3 mm enable precise working during laparoscopy with only minimum incision. The connection is ensured by a bipolar standard cable with flat plug.



Art.-No.	Description
392 993 012	Ø 3 mm Bipolar L-hook 340 mm length
392 993 125	Ø 3 mm Bipolar L-hook 360 mm length



Art.-No.	Description
392 993 013	Ø 3 mm Bipolar V-hook 340 mm length
392 993 126	Ø 3 mm Bipolar V-hook 360 mm length



Art.-No.	Description
392 993 014	Ø 3 mm Bipolar needle 340 mm length
392 993 127	Ø 3 mm Bipolar needle 360 mm length

6 INSTRUMENTS FOR COAGULATION

BIPOLAR ELECTRODES



The bipolar coagulation electrodes enable the dissection and coagulation of tissue. The product range comprises instruments for both extensive and pinpoint coagulation. Advanced bipolar technology and the optimum arrangement of the poles enable safe working with precisely defined coagulation areas. The isolation coating between the electrode ensures a constant distance and, therefore, provides uniform coagulation results.



Art.-No.	Description
392 993 008	Ø 5 mm J-hook 340 mm length



Art.-No.	Description
392 993 009	Ø 5 mm L-hook 340 mm length



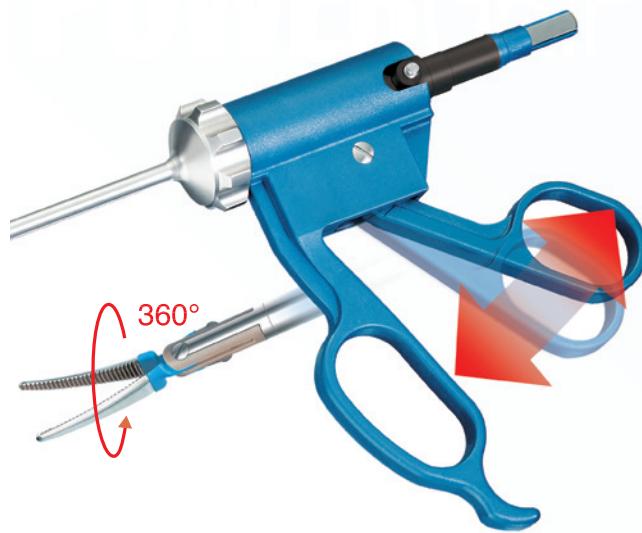
Art.-No.	Description
392 993 010	Ø 5 mm Spatula 340 mm length



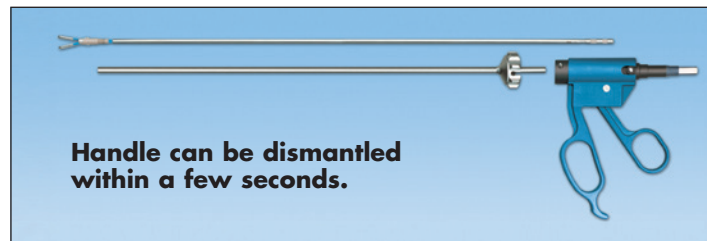
Art.-No.	Description
392 993 011	Ø 5 mm Dôme 340 mm length

6 INSTRUMENTS FOR COAGULATION

BIPOLAR COAGULATION FORCEPS, SCISSORS AND DISSECTORS



The bipolar coagulation forceps are instruments used for grasping, cutting and bipolar coagulation in laparoscopic surgery. Their mechanism enables active and precise opening and closing of the jaws as well as applying very high pressure when grasping and cutting while precisely coagulating the tissue. Electrode inserts for different applications can be exchanged within a few seconds.



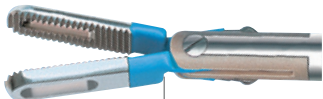
Art.-No.	Description
392 993 015	Handle



Art.-No.	Description
392 993 016	Ø 5 mm Outer tube 340 mm length

6 INSTRUMENTS FOR COAGULATION

BIPOLAR COAGULATION FORCEPS, SCISSORS AND DISSECTORS



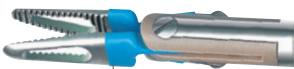
Ø 5 mm Grasping forceps, fenestrated

Complete instrument	Insert	Tube	Handle	Length
392 993 017	392 993 117	392 993 016	392 993 015	340 mm



Ø 5 mm Forceps with curved jaws, slim

Complete instrument	Insert	Tube	Handle	Length
392 993 018	392 993 118	392 993 016	392 993 015	340 mm



Ø 5 mm Delta grasping forceps, fenestrated

Complete instrument	Insert	Tube	Handle	Length
392 993 019	392 993 119	392 993 016	392 993 015	340 mm



Ø 5 mm Grasping forceps, fenestrated and curved

Complete instrument	Insert	Tube	Handle	Length
392 993 021	392 993 121	392 993 016	392 993 015	340 mm



Ø 5 mm Claw forceps

Complete instrument	Insert	Tube	Handle	Length
392 993 024	392 993 124	392 993 016	392 993 015	340 mm



Ø 5 mm Curved scissors, Metzenbaum type

Complete instrument	Insert	Tube	Handle	Length
392 993 022	392 993 122	392 993 016	392 993 015	340 mm



Ø 5 mm Maryland dissector, curved

Complete instrument	Insert	Tube	Handle	Length
392 993 023	392 993 123	392 993 016	392 993 015	340 mm

6 INSTRUMENTS FOR COAGULATION

BIPOLAR COAGULATION FORCEPS, SCISSORS AND DISSECTORS



Bipolar electrodes



Art.-No.	Description
392 993 001	Ø 5 mm Bipolar forceps with fenestrated jaws Complete instrument 330 mm length



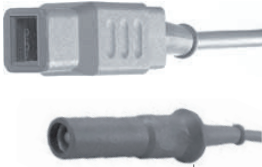
Art.-No.	Description
392 993 002	Ø 5 mm Bipolar forceps with short jaws Complete instrument 330 mm length



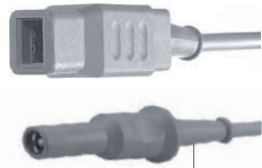
Art.-No.	Description
392 993 003	Ø 5 mm Bipolar forceps with long jaws Complete instrument 330 mm length

6 INSTRUMENTS FOR COAGULATION

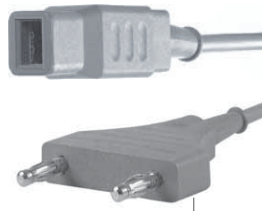
BIPOLAR CABLES



Art.-No.	Description
390 803 000	Bipolar High frequency cable 3m length For SOPRO-COMEG bipolar electrodes and forceps to connect with electro surgery units model SELECT and ERBE
390 805 000	Bipolar High frequency cable 5m length For SOPRO-COMEG bipolar electrodes and forceps to connect with electro surgery units model SELECT and ERBE



Art.-No.	Description
390 813 000	Bipolar High frequency cable 3m length For SOPRO-COMEG bipolar electrodes and forceps to connect with electro surgery units WOLF, MARTIN, BERCHTOLD, AESCULAP
390 815 000	Bipolar High frequency cable 5m length For SOPRO-COMEG bipolar electrodes and forceps to connect with electro surgery units WOLF, MARTIN, BERCHTOLD, AESCULAP



Art.-No.	Description
390 863 000	Bipolar High frequency cable 3m length For SOPRO-COMEG bipolar electrodes and forceps to connect with electro surgery units model AESCULAP & VALLEYLAB
390 865 000	Bipolar High frequency cable 5m length For SOPRO-COMEG bipolar electrodes and forceps to connect with electro surgery units model AESCULAP & VALLEYLAB



Art.-No.	Description
390 843 000	Bipolar High frequency cable 3m length For SOPRO-COMEG bipolar electrodes and forceps to connect with electro surgery units model AMERICAN UNITS
390 845 000	Bipolar High frequency cable 5m length For SOPRO-COMEG bipolar electrodes and forceps to connect with electro surgery units model AMERICAN UNITS



7 ACCESSORIES

Palpation probes	p94
Injection and puncture needles	p94
Retractors	p94
Extractor	p94
Cholangiography	p95
Handles and modular instruments for irrigation and aspiration	p95

7 DIVERS ACCESSORIES

Company

Optics

Trocars

PALPATION PROBES



Art.-No.	Description
392 999 300	Ø 5 mm Palpation probe, graduated 330 mm length
392 999 299	Ø 5 mm Palpation probe, graduated 450 mm length

Dissecting and grasping forceps

INJECTION AND PUNCTION NEEDLES



Ø 5 mm injection punction needles

Complete instrument	Length	Outer Ø	Needle Ø
392 999 301	330 mm	Ø 5 mm	Ø 1,4 mm
392 999 302	450 mm	Ø 5 mm	Ø 1,4 mm

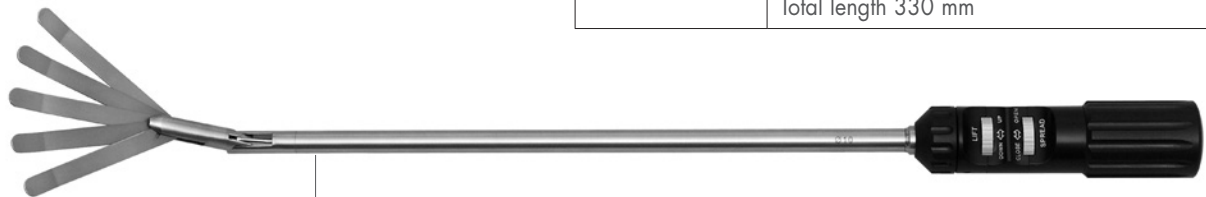
Scissors biopsy forceps

RETRACTORS



Art.-No.	Description
392 995 003	Ø 5 mm retractor 3 fingers (68 mm length) Total length 330 mm

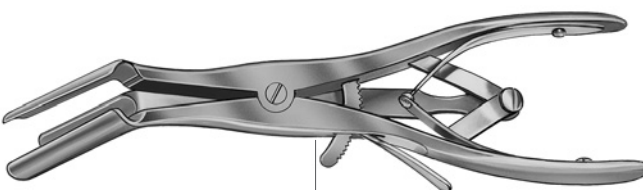
Instruments for coagulation



Art.-No.	Description
392 995 001	Ø 10 mm Liver elevator with double function 330 mm length - Spread and Lift

Divers accessories

EXTRACTOR



Art.-No.	Description
392 996 002	Abdominal specula

Suture and ligature

Sterilization and maintenance

7 DIVERS ACCESSORIES

CHOLANGIOGRAPHY



Art.-No.	Description
393 999 700	Ø 5 mm Cholangiogram clamp 330 mm length

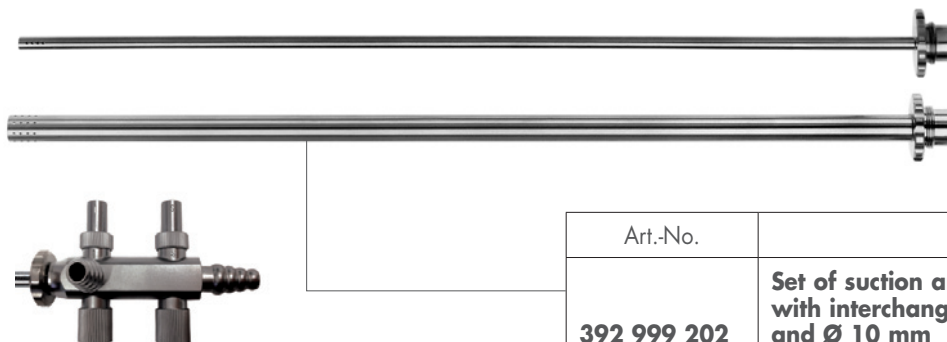
HANDLES AND MODULAR INSTRUMENTS FOR IRRIGATION AND ASPIRATION



Art.-No.	Description
392 999 220	Ø 5 mm Suction-Irrigation Cannula with Sliding Valve and Roundhole Sucker with handle and 4 holes Working length 330 mm



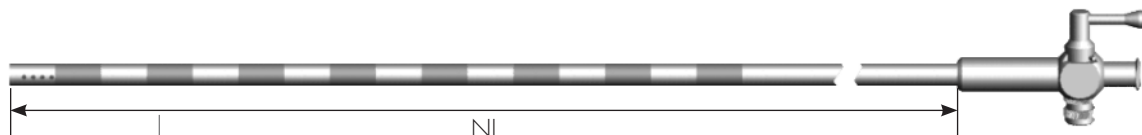
Art.-No.	Description
392 999 201	Ø 5 mm Suction-Irrigation Cannula with Tube connection and Roundhole Sucker with 4 holes Working length 330 mm



Art.-No.	Description
392 999 202	Set of suction and irrigation tubes with interchangeable tubes Ø 5 mm and Ø 10 mm With Luer-Lock Working length 330 mm

7 DIVERS ACCESSORIES

HANDLES AND MODULAR INSTRUMENTS FOR IRRIGATION AND ASPIRATION



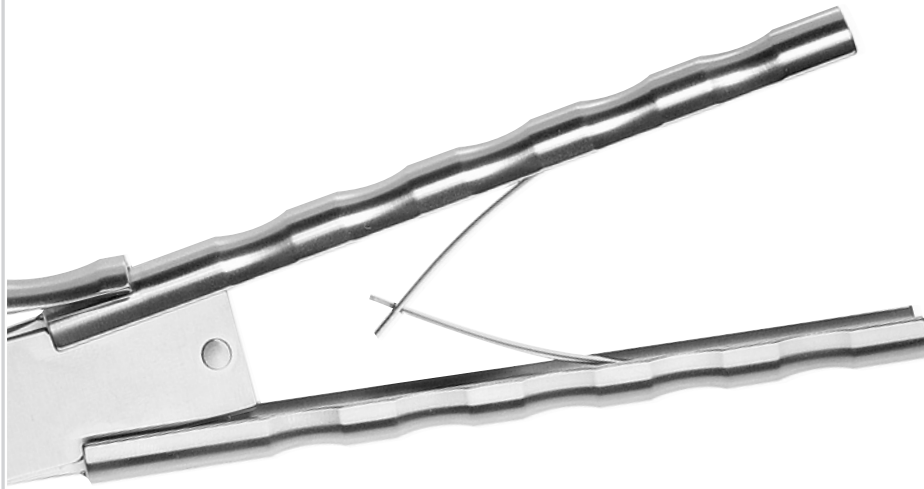
Art.-No.	Description
392 999 213	Ø 5 mm Suction-Irrigation Cannula With Luer-Lock connection and Stop Cock, Suction tube graduated, 16 drillings Working length 330 mm
392 999 212	Ø 5 mm Suction-Irrigation Cannula With Luer-Lock connection and Stop Cock, Suction tube graduated, 16 drillings Working length 450 mm



Art.-No.	Description
392 999 250	Suction irrigation Pistol Handle With sliding valve for exchangeable shafts with thread M8x1 2 combined Luer-Lock/Tube Connectors



Art.-No.	Description
392 999 270	Ø 3 mm Exchangeable Suction irrigation shaft With thread M8x1 and 4 sidewise drillings Working length 340 mm
392 999 260	Ø 5 mm Exchangeable Suction irrigation shaft With thread M8x1 and 4 sidewise drillings Working length 340 mm
392 999 280	Ø 10 mm Exchangeable Suction irrigation shaft With thread M8x1 and 4 sidewise drillings Working length 340 mm

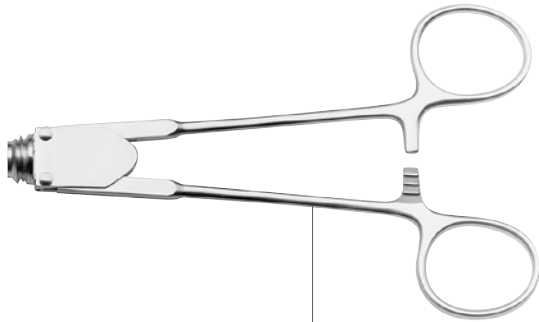


8 SUTURE AND LIGATURE

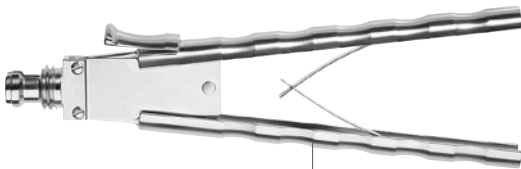
Needle holder	p100
Knot pushers	p102
Facial closure	p102
Clip applying forceps	p103

8 SUTURE AND LIGATURE

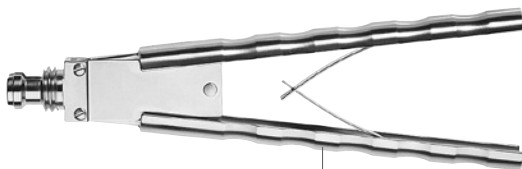
NEEDLE HOLDER



Art.-No.	Description
393 041 100	Axial ring handle, with ratchet



Art.-No.	Description
393 051 100	Axial handle, with spreading spring and ratchet



Art.-No.	Description
393 061 100	Axial handle, with spreading spring



Ø 5mm Needle holder straight, with inserted tungsten carbide, crosswise teeth
Single action jaws

Complete instrument	Insert	Tube	Handle	Length
393 540 046	393 500 046	393 501 100	393 041 100	330 mm
393 550 046	393 500 046	393 501 100	393 051 100	330 mm
393 560 046	393 500 046	393 501 100	393 061 100	330 mm
393 540 146	393 500 146	393 501 300	393 041 100	360 mm
393 550 146	393 500 146	393 501 300	393 051 100	360 mm
393 560 146	393 500 146	393 501 300	393 061 100	360 mm
394 540 046	394 500 046	394 501 200	393 041 100	450 mm
394 550 046	394 500 046	394 501 200	393 051 100	450 mm
394 560 046	394 500 046	394 501 200	393 061 100	450 mm

8 SUTURE AND LIGATURE

NEEDLE HOLDER



Ø 5mm Needle holder right curved, with inserted tungsten carbide, crosswise teeth
Single action jaws

Complete instrument	Insert	Tube	Handle	Length
393 540 047	393 500 047	393 501 100	393 041 100	330 mm
393 550 047	393 500 047	393 501 100	393 051 100	330 mm
393 560 047	393 500 047	393 501 100	393 061 100	330 mm
393 540 147	393 500 147	393 501 300	393 041 100	360 mm
393 550 147	393 500 147	393 501 300	393 051 100	360 mm
393 560 147	393 500 147	393 501 300	393 061 100	360 mm
394 540 047	394 500 047	394 501 200	393 041 100	450 mm
394 550 047	394 500 047	394 501 200	393 051 100	450 mm
394 560 047	394 500 047	394 501 200	393 061 100	450 mm



Ø 5mm Needle holder left curved, with inserted tungsten carbide, crosswise teeth
Single action jaws

Complete instrument	Insert	Tube	Handle	Length
393 540 048	393 500 048	393 501 100	393 041 100	330 mm
393 550 048	393 500 048	393 501 100	393 051 100	330 mm
393 560 048	393 500 048	393 501 100	393 061 100	330 mm
393 540 148	393 500 148	393 501 300	393 041 100	360 mm
393 550 148	393 500 148	393 501 300	393 051 100	360 mm
393 560 148	393 500 148	393 501 300	393 061 100	360 mm
394 540 048	394 500 048	394 501 200	393 041 100	450 mm
394 550 048	394 500 048	394 501 200	393 051 100	450 mm
394 560 048	394 500 048	394 501 200	393 061 100	450 mm



Ø 5mm Needle holder/positioner, convex/concave shaped jaws, with fixation teeth, with wolfram-carbide-coated tips
Single action jaws

Complete instrument	Insert	Tube	Handle	Length
393 540 049	393 500 049	393 501 100	393 041 100	330 mm
393 550 049	393 500 049	393 501 100	393 051 100	330 mm
393 560 049	393 500 049	393 501 100	393 061 100	330 mm
393 540 149	393 500 149	393 501 300	393 041 100	360 mm
393 550 149	393 500 149	393 501 300	393 051 100	360 mm
393 560 149	393 500 149	393 501 300	393 061 100	360 mm
394 540 049	394 500 049	394 501 200	393 041 100	450 mm
394 550 049	394 500 049	394 501 200	393 051 100	450 mm
394 560 049	394 500 049	394 501 200	393 061 100	450 mm

8 SUTURE AND LIGATURE

KNOT PUSHERS



Art.-No.	Description
392 999 400	Ø 4 mm Knot pusher with open eye 330 mm length
392 999 450	Ø 4 mm Knot pusher with open eye 450 mm length



Art.-No.	Description
392 999 401	Ø 4.5 mm Knot guide with slot 330 mm length



Art.-No.	Description
392 999 403	Ø 4 mm Knot pusher with closed eye 330 mm length
392 999 453	Ø 4 mm Knot pusher with closed eye 450 mm length

FACIAL CLOSURE



Art.-No.	Description
392 999 402	Ø 2.3 mm Facial closure 140 mm length

8 SUTURE AND LIGATURE

CLIP APPLYING FORCEPS



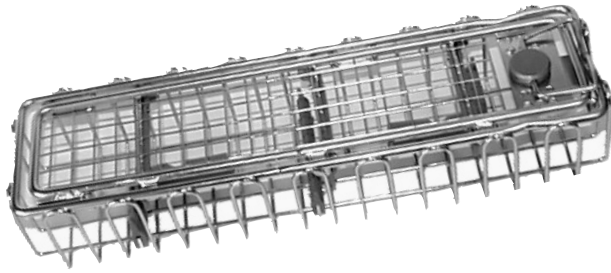
Art.-No.	Description
392 999 802	Ø 5 mm Clip applying forceps for small or medium titanium clips (Ethicon) 360° rotatable and dismantable 330 mm length



Art.-No.	Description
392 999 800	Ø 10 mm Clip applying forceps for medium/ large titanium clips (Ethicon) 360° rotatable and dismantable 330 mm length
392 999 803	Ø 10 mm Clip applying forceps for large titanium clips (Ethicon) 360° rotatable and dismantable 330 mm length



Art.-No.	Description
392 999 801	Titanium clips (Ethicon) Medium large 18 x 6 pieces
392 999 804	Titanium clips (Ethicon) Small 18 x 6 pieces



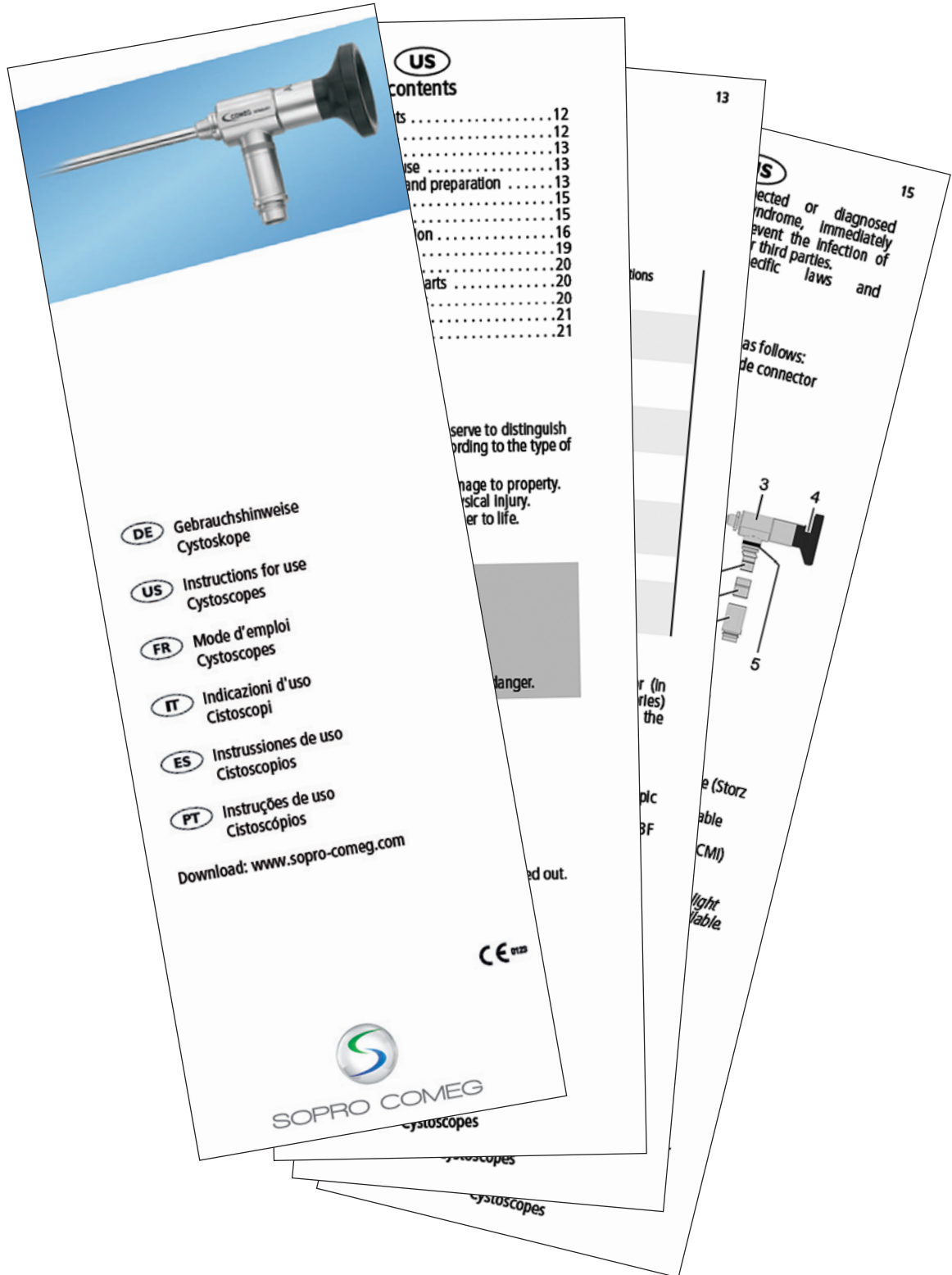
9 MAINTENANCE, CLEANING AND STERILIZATION

General information	p106
Handling instructions for telescopes	p107
Sterilization baskets	p108

9 STERILIZATION AND MAINTENANCE

GENERAL INFORMATION

All our products are delivered with a IFU (Instruction for Use) where you will find all proper advices as far as maintenance, cleaning and sterilization are concerned.



9 STERILIZATION AND MAINTENANCE

HANDLING INSTRUCTIONS FOR TELESCOPES

The telescopes are intended to be used according to the general instructions and only by instructed or trained medical personnel.

Service and maintenance may just be performed by authorized service personnel.

Prior and after each use on the telescopes a visual and functional inspection for completeness, optical quality, rough surfaces, sharp edges and prominent parts has to be performed. Immediately after each use the telescopes have to be cleaned and disinfected.

Special care has to be taken to scopes with working channel. It must be ensured that the solution for disinfection reaches all areas within the narrow working channel.

For the adjacent sterilization process the telescopes must be free of contaminations and residues of the agent.

In order to be compatible to other products and to allow combinations please make sure that the intended use and technical parameters (working length, diameter, connection type, etc.) match and do not adversely affect the performance and the safety requirements.

Please refer to applicable instruction manuals.

As with any optical device, SOPRO-COMEG telescopes are fragile and should be handled with care. In order to avoid damage or loss of quality the following instructions concerning handling, storing and transportation have to be followed:

- Always hold the endoscope by its eyepiece or body part!
- If possible, store the endoscopes individually!
- Avoid contact between the glass parts and other instruments or surfaces!
- The telescopes may under no circumstances be exposed to Gamma radiation! The image quality can be adversely affected!
- Do not drop the endoscope and do not bend the tube, or otherwise add mechanical stress!

Conditions of use, storage and transport:

Use: +10° C to +134° C, 30% to 100 % rel. humidity, pressure 700 hP to 2000 hP
Storage/ Transport: -20° C to +60° C, 10% to 90 % rel. humidity, pressure 700 hP to 1060 hP

Safety information:

Check and sterilize instrument prior to any use. In case of any doubt return instrument to manufacturer for investigation and safety check. Disposal of product please refer to the specific regulations of your country.

Handling: In case you do not have the current version of the Handling and Instruction Guide we would be pleased to send a copy upon request.

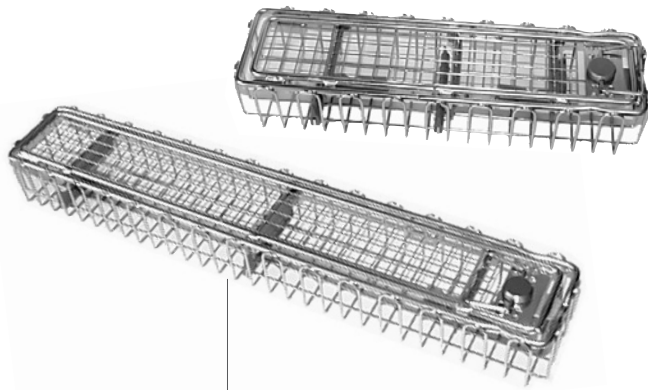
Combinations: A requirement for common use with other products is the correspondence in intended use and the technical specifications (working length, diameter, etc.). Further information you will find in our product catalogues.

Warranty: For the warranty time please look at our general trade conditions. Excluded from warranty are misuse, incorrectly cleaning, maintenance and repair, normal wear and tear and defects, known at the time of cession.

Prior to each use and/or returning to the manufacturer the products have to be cleaned and sterilized according to this maintenance instructions.

9 STERILIZATION AND MAINTENANCE

STERILIZATION BASKETS



Include a cover and a silicone endoscope holder for easier handling during treatment (cleaning, sterilization, etc.) maximum protection against damages suitable for steam, gas and plasma sterilization.

Art.-No.	Description
390 400 100	Sterilization basket With silicone holder Size 290 x 80 x 55mm
390 400 110	Sterilization basket With silicone holder Size 460 x 80 x 55mm
390 400 130	Sterilization basket With silicone holder Size 458 x 166 x 82mm
390 400 150	Sterilization basket With silicone holder Size 640 x 150 x 77mm



Art.-No.	Description
191 402 061	Plastic sterilization tube for endoscope For steam sterilization Box of 10 units



Art.-No.	Description
195 101 000	Sterilization tube for electrodes For steam sterilization

9 STERILIZATION AND MAINTENANCE

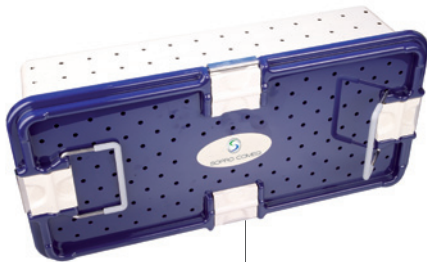
STERILIZATION BASKETS



Art.-No.	Description
390 400 160	Plastic sterilization box For steam sterilization Delivered with a silicone mat Size 530 x 255 x 67mm

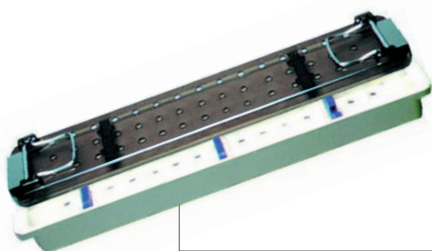


Art.-No.	Description
390 400 170	Plastic sterilization box For steam sterilization Delivered with a silicone mat and an internal tray Size 530 x 255 x 110mm
391 309 000	Plastic sterilization box for the bipolar resectoscope For steam sterilization Delivered with a silicone mat Size 530 x 255 x 115mm



Art.-No.	Description
390 400 180	Plastic sterilization box For steam sterilization Delivered with a silicone mat and two internal trays Size 530 x 255 x 140mm

PLASTIC STERILIZATION BOXES



Art.-No.	Description
390 400 190	Plastic sterilization box for two telescopes Size 394 x 70 x 35mm
390 400 200	Plastic sterilization box for two telescopes Size 457 x 70 x 35mm



SOPRO COMEG

EVERYWHERE

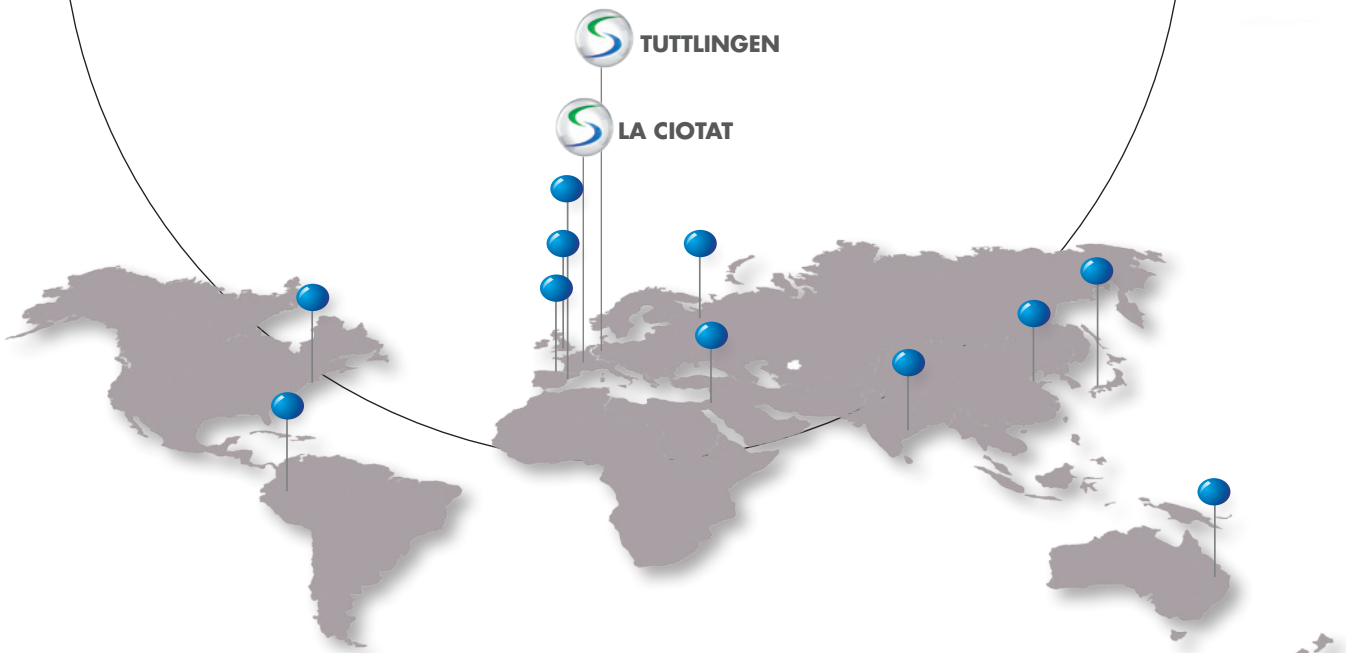
Worldwide centres to ease and fasten the service of our complete product line

ALWAYS

Dedicated to medical improvement for more than 40 years

AT YOUR SIDE

Direct and quick communication with our local sales force. National placed inventory to ensure quick delivery time



SOPRO SA - ZAC Athélia IV - Avenue des Génévriers
13705 La Ciotat cedex - France
Tél. +33 (0) 442 98 01 01 - Fax +33 (0) 442 71 76 90

SOPRO-COMEG GmbH - Dornierstr. 55
D-78532 Tuttlingen - Germany
Tel. +49 (0) 7461-9344-0 - Fax +49 (0) 7461-9344-21

www.sopro-comeg.com